



[Go to Product page](#)

Datasheet for ABIN666712

## DPP4 Protein (AA 39-766) (His tag)

### 1 Image

#### Overview

Quantity:	100 µg
Target:	DPP4
Protein Characteristics:	AA 39-766
Origin:	Human
Source:	Hi-5 Cells
Protein Type:	Recombinant
Purification tag / Conjugate:	This DPP4 protein is labelled with His tag.
Application:	SDS-PAGE (SDS)

#### Product Details

Characteristics:	DPP4 (CD26), 39-766aa, Human,His-Tagged, Recombinant, Hi-5 cell
Purity:	> 95 % by SDS - PAGE

#### Target Details

Target:	DPP4
Alternative Name:	DPP4 (CD26) ( <a href="#">DPP4 Products</a> )
Background:	DPP4, dipeptidyl peptidase-4 is a complex enzyme expressed on the surface of most cell types and is a serine exopeptidase that cleaves x-proline dipeptides from the N-terminus of polypeptides. DPP4 protein is associated with intracellular signal transduction, apoptosis and plays an important role in tumor biology. There are at least 63 substrates which can bind specifically to DPP4 enzyme including growth factors, chemokines, neuro peptides.

## Target Details

Furthermore, DPP4 plays a major role in glucose metabolism by cleaving incretins such as glucose-dependent insulintropic polypeptide (GIP) and glucagon-like peptide-1 (GLP-1).

Recombinant human DPP4 protein was expressed with c-terminal His-tag in high-5 cells using baculovirus expression system and purified by using conventional chromatography techniques.

Synonyms: DPPIV, ADABP, ADCP2, TP103, Dipeptidyl peptidase-4, DPP4, dipeptidyl-peptidase 4, CD26, dipeptidylpeptidase IV (CD26 adenosine deaminase complexing protein 2), adenosine deaminase complexing protein 2., NCBI no.: NP\_001926

Molecular Weight: 86.4kDa (746aa), confirmed by MALDI-TOF.

Pathways: [Peptide Hormone Metabolism](#), [Regulation of Leukocyte Mediated Immunity](#)

## Application Details

Restrictions: For Research Use only

## Handling

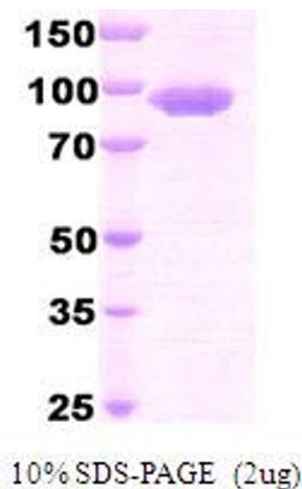
Format: Liquid

Concentration: 0.5 mg/ml (determined by Bradford assay)

Buffer: Liquid in 20mM Tris-HCl pH 8.0, 100mM NaCl, 1mM EDTA, 10% glycerol

Storage: 4 °C

## Images



### SDS-PAGE

Image 1.