



[Go to Product page](#)

Datasheet for ABIN666713 **PPIH Protein (AA 1-177)**

1 Image

Overview

Quantity:	100 µg
Target:	PPIH
Protein Characteristics:	AA 1-177
Origin:	Human
Source:	Escherichia coli (E. coli)
Protein Type:	Recombinant
Application:	SDS-PAGE (SDS)

Product Details

Characteristics:	Cyclophilin H(PPIH), 1-177aa, Human,Recombinant, E.coli
Purity:	> 95 % by SDS - PAGE

Target Details

Target:	PPIH
Alternative Name:	Cyclophilin H (PPIH) (PPIH Products)
Background:	Cyclophilin H (also known as peptidylpropyl isomerase H, PPIH) is a member of peptidyl-propyl cis-trans isomerase (PPIase) family, which catalyzes the cis-trans isomerization of proline imidic peptide bonds in oligopeptides and accelerates the folding of proteins. The cyclophilin H is a specific component of the human U4/U6 small nuclear ribonucleoprotein particle involved in the nuclear splicing of pre-mRNA. It stably associates with the U4/U6-60kD and -90kD proteins, the human orthologues of the Saccharomyces cerevisiae Prp4 and Prp3 splicing

Target Details

factors. Recombinant human cyclophilin H was expressed in E.coli and purified by conventional chromatography techniques. Synonyms: Peptidylprolyl isomerase H, PPIH, CYPH, CYP20, SnuCyp-20, SnuCyp-20, PPlase H, Rotamase H, Cyclophilin H , Peptidylprolyl isomerase H CypH, EC 5.2.1.8, MGC5016, Small nuclear ribonucleoprotein particle-specific cyclophilin H, USACYC, UsnRNP associated cyclophilin SnuCyp20,. NCBI no.: NP_006338

Molecular Weight: 19.2 kDa (177 aa), confirmed by MALDI-TOF.

Application Details

Restrictions: For Research Use only

Handling

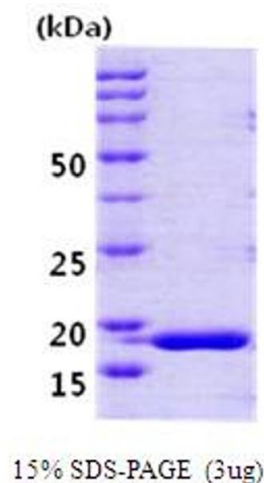
Format: Liquid

Concentration: 1 mg/ml (determined by Bradford assay)

Buffer: Liquid in Phosphate buffered saline (pH7.4), 10% glycerol

Storage: 4 °C

Images



SDS-PAGE

Image 1.