



## Datasheet for ABIN666730 FH Protein (AA 44-510)



[Go to Product page](#)

### 1 Image

#### Overview

Quantity:	100 µg
Target:	FH
Protein Characteristics:	AA 44-510
Origin:	Human
Source:	Escherichia coli (E. coli)
Protein Type:	Recombinant
Application:	SDS-PAGE (SDS)

#### Product Details

Characteristics:	Fumarase, 44-510aa, Human, Recombinant, E.coli
Purity:	> 95 % by SDS - PAGE

#### Target Details

Target:	FH
Alternative Name:	Fumarase ( <a href="#">FH Products</a> )

**Background:** Fumarase (Fumarate hydratase) is an enzyme that catalyzes the reversible hydration/dehydration of fumarate to S-malate and is involved in the tricarboxylic acid (TCA), or Krebs cycle. This enzyme exists in both a cytosolic form and an N-terminal extended mitochondrial form. The N-terminal extended form is targeted to the mitochondrion, where the removal of the extension is the same form as in the cytoplasm. Fumarase deficiency can lead to progressive encephalopathy, cerebral atrophy and developmental delay and this enzyme also

## Target Details

is thought to act as a tumor suppressor. Recombinant Fumarase was expressed in E.coli and was purified by conventional chromatography techniques. Synonyms: FH, HLRCC, LRCC, MCL, MCUL1 , Fumarate hydratase Fumarase, Fumarate hydratase mitochondrial, MCUL 1, Multiple hereditary cutaneous leiomyomata. NCBI no.: NP\_000134

Molecular Weight: 50.2kDa (467aa), confirmed by MALDI-TOF.

## Application Details

Restrictions: For Research Use only

## Handling

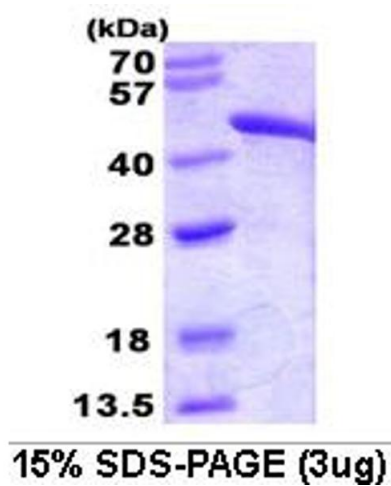
Format: Liquid

Concentration: 1 mg/ml (determined by Bradford assay)

Buffer: Liquid. In 20 mM Tris-HCl buffer (pH 8.0)

Storage: 4 °C

## Images



### SDS-PAGE

Image 1.