

Datasheet for ABIN666737
BMP4 Protein (AA 293-408)



[Go to Product page](#)

1 Image

Overview

Quantity:	100 µg
Target:	BMP4
Protein Characteristics:	AA 293-408
Origin:	Human
Source:	Escherichia coli (E. coli)
Protein Type:	Recombinant
Application:	SDS-PAGE (SDS)

Product Details

Characteristics:	BMP- 4, 293-408aa, Human, Recombinant, E.coli
Purity:	> 95 % by SDS - PAGE

Target Details

Target:	BMP4
Alternative Name:	BMP- 4 (BMP4 Products)

Background: Bone morphogenetic protein 4 (BMP-4) is a member of the bone morphogenetic protein family which belongs to the TGF-beta superfamily. This protein is a vital regulatory molecule that functions throughout bone and cartilage development, specifically tooth development, limb formation, bone induction, and fracture repair. In human embryonic development, BMP- 4 is required for the early differentiation of the embryo and establishing of a dorsal-ventral axis. And it is overexpressed in patients with fibrodysplasia ossificans progressiva. Recombinant BMP-4

Target Details

was expressed as insoluble protein aggregate in E.coli and purified by conventional chromatography, after refolding of the isolated inclusion bodies in a renaturation buffer.
Synonyms: BMP-2B, DVR4, Bone morphogenetic protein 4 BMP 4, BMP2B, BMP2B1, ZYME, BMP4. NCBI no.: NP_001193

Molecular Weight: 13.2 kDa (117 aa), confirmed by MALDI-TOF.

Pathways: [Steroid Hormone Mediated Signaling Pathway](#), [Regulation of Muscle Cell Differentiation](#), [Tube Formation](#), [Skeletal Muscle Fiber Development](#)

Application Details

Restrictions: For Research Use only

Handling

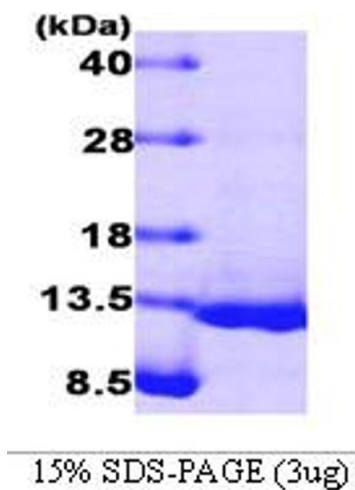
Format: Liquid

Concentration: 0.5 mg/ml (determined by Bradford assay)

Buffer: Liquid. In 10mM Sodium citrate buffer (pH 3.5), 10% glycerol

Storage: 4 °C

Images



SDS-PAGE

Image 1.