

Datasheet for ABIN666745
ALDH2 Protein (AA 18-517)[Go to Product page](#)

1 Image

Overview

Quantity:	100 µg
Target:	ALDH2
Protein Characteristics:	AA 18-517
Origin:	Human
Source:	Escherichia coli (E. coli)
Protein Type:	Recombinant
Application:	SDS-PAGE (SDS)

Product Details

Characteristics:	ALDH2,18-517aa, Human, Recombinant, E.coli
Purity:	> 90 % by SDS - PAGE

Target Details

Target:	ALDH2
Alternative Name:	ALDH2 (ALDH2 Products)
Background:	ALDH2 (Aldehyde dehydrogenase 2 family) belongs to the aldehyde dehydrogenase family which catalyze the chemical transformation from acetaldehyde to acetic acid and is the second enzyme of the major oxidative pathway of alcohol metabolism. There are two major liver isoforms of this enzyme, cytosolic and mitochondrial, and they can be also distinguished by their electrophoretic mobilities, kinetic properties, and subcellular localizations. Recombinant human ALDH2 protein was expressed in E.coli and purified by using conventional

Target Details

chromatography techniques. Synonyms: ALDH-E2, ALDHI, ALDM, Aldehyde dehydrogenase, mitochondrial Acetaldehyde dehydrogenase 2, Aldehyde dehydrogenase 2 family, Aldehyde dehydrogenase 2 family (mitochondrial), Aldehyde dehydrogenase mitochondrial, ALDH 2, ALDH class 2, ALDH E2, Liver mitochondrial ALDH, MGC1806, Mitochondrial aldehyde dehydrogenase 2, Nucleus encoded mitochondrial aldehyde dehydrogenase 2. NCBI no.: NP_000681

Molecular Weight: 54.5 kDa (501aa), confirmed by MALDI-TOF.

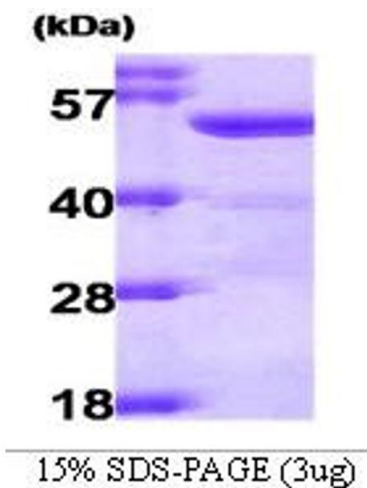
Application Details

Restrictions: For Research Use only

Handling

Format:	Liquid
Concentration:	1 mg/ml (determined by Bradford assay)
Buffer:	Liquid. In 20 mM Tris-HCl buffer (pH 7.5) containing 1mM DTT, 1 mM EDTA, 10% glycerol
Storage:	4 °C

Images



SDS-PAGE

Image 1.