

Datasheet for ABIN666752

SPG21 Protein (AA 1-308) (His tag)[Go to Product page](#)**1** Image

Overview

Quantity:	100 µg
Target:	SPG21
Protein Characteristics:	AA 1-308
Origin:	Human
Source:	Escherichia coli (E. coli)
Protein Type:	Recombinant
Purification tag / Conjugate:	This SPG21 protein is labelled with His tag.
Application:	SDS-PAGE (SDS)

Product Details

Characteristics:	SPG21, 1-308 aa, Human, His-tagged, Recombinant, E.coli
Purity:	> 95 % by SDS - PAGE

Target Details

Target:	SPG21
Alternative Name:	SPG21 (SPG21 Products)
Background:	Spastic paraplegia 21 (SPG21), also known as Maspardin, binds to the hydrophobic C-terminal amino acids of CD4 and may play a role as a negative regulatory factor in CD4-dependent T-cell activation. This protein is widely expressed in various tissues including heart, brain, placenta, lung, liver, skeletal muscle, kidney and pancreas. Mutations in SPG21 cause Mast syndrome, an autosomal-recessive complicated form of hereditary spastic paraplegia characterized by

Target Details

dementia, thin corpus callosum and white matter abnormalities. Recombinant human SPG21 protein, fused to His-tag at N-terminus, was expressed in E.coli and purified by using conventional chromatography. Synonyms: ACP33, BM-019, GL010, Maspardin, MAST, Spastic paraplegia 21 isoform a Acid cluster protein 33, BM019, Spastic paraplegia 21 autosomal recessive Mast syndrome protein, SPG21. NCBI no.: NP_057714

Molecular Weight: 37.1 kDa (328aa), confirmed by MALDI-TOF.

Application Details

Restrictions: For Research Use only

Handling

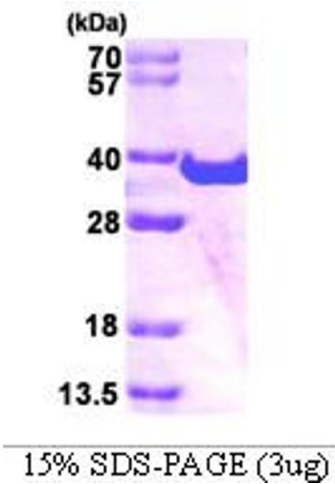
Format: Liquid

Concentration: 1 mg/ml (determined by Bradford assay)

Buffer: Liquid. In 20 mM Tris-HCl buffer (pH 8.0)

Storage: 4 °C

Images



SDS-PAGE

Image 1.