

Datasheet for ABIN666753

SPR Protein (AA 1-261) (His tag)[Go to Product page](#)**1** Image

Overview

Quantity:	100 µg
Target:	SPR
Protein Characteristics:	AA 1-261
Origin:	Human
Source:	Escherichia coli (E. coli)
Protein Type:	Recombinant
Purification tag / Conjugate:	This SPR protein is labelled with His tag.
Application:	SDS-PAGE (SDS)

Product Details

Characteristics:	Sepiapterin reductase, 1-261 aa, Human, His-tagged, Recombinant, E.coli
Purity:	> 95 % by SDS - PAGE

Target Details

Target:	SPR
Alternative Name:	Sepiapterin reductase (SPR Products)
Background:	Sepiapterin reductase (SPR) belongs to the short-chain dehydrogenase/reductase (SDR) family and also reduces various exogenous carbonyl compounds including phenylpropanedione. SPR is an essential enzyme for the biosynthesis of tetrahydrobiopterin, an essential cofactor for aromatic amino acid hydrolases including tyrosine hydroxylase, the rate-limiting enzyme in dopamine synthesis. Defects in SPR cause DOPA-responsive dystonia defined by the presence

Target Details

of sustained involuntary muscle contractions, often leading to abnormal postures.

Recombinant human SPR protein, fused to His-tag at N-terminus, was expressed in E.coli and purified by using conventional chromatography. Synonyms: SPR, Sepiapterin reductase. NCBI no.: NP_003115

Molecular Weight: 30.2 kDa (281aa), confirmed by MALDI-TOF.

Pathways: [Regulation of Systemic Arterial Blood Pressure by Hormones](#), [Feeding Behaviour](#), [Smooth Muscle Cell Migration](#)

Application Details

Restrictions: For Research Use only

Handling

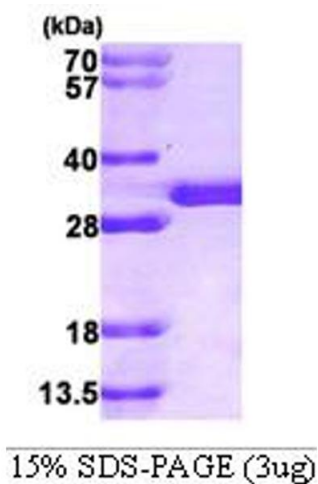
Format: Liquid

Concentration: 1 mg/ml (determined by Bradford assay)

Buffer: Liquid. In 20 mM Tris-HCl buffer (pH 8.0)

Storage: 4 °C

Images



SDS-PAGE

Image 1.