

Datasheet for ABIN666764
Protein A Protein (AA 37-469)



[Go to Product page](#)

1 Image

Overview

Quantity:	100 µg
Target:	Protein A
Protein Characteristics:	AA 37-469
Origin:	Staphylococcus aureus
Source:	Escherichia coli (E. coli)
Protein Type:	Recombinant
Application:	SDS-PAGE (SDS)

Product Details

Characteristics:	Protein A, 37-469 aa, S.aureus, Recombinant, E.coli
Purity:	> 90 % by SDS - PAGE

Target Details

Target:	Protein A
Abstract:	Protein A Products
Background:	<p>Protein A is a 40-60 kDa surface protein originally found in the cell wall of the bacteria <i>Staphylococcus aureus</i>. It binds with high affinity to human IgG1 and IgG2 as well as mouse IgG2a and IgG2b. Protein A binds with moderate affinity to human IgM, IgA and IgE as well as to mouse IgG3 and IgG1. Due to its affinity for the Fc region of many mammalian immunoglobulins, protein A is considered a universal reagent in biochemistry and immunology. Recombinant <i>Staphylococcus aureus</i> Protein A was expressed in <i>E.coli</i> and purified by using</p>

Target Details

conventional chromatography. Synonyms: Immunoglobulin G binding protein A ,
Immunoglobulin G binding protein A Staphylococcal protein A, SPA,. NCBI no.: ACD80064

Molecular Weight: 48.1 kDa (434aa), confirmed by MALDI-TOF.

Application Details

Restrictions: For Research Use only

Handling

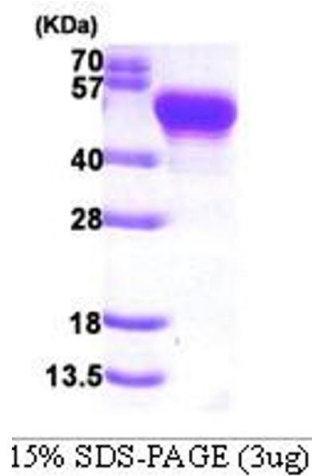
Format: Liquid

Concentration: 1 mg/ml (determined by BCA assay)

Buffer: Liquid. In 20 mM Tris-HCl buffer (pH 8.0) containing 10% glycerol,

Storage: 4 °C

Images



SDS-PAGE

Image 1.