

Datasheet for ABIN666765

WIF1 Protein (AA 29-379) (His tag)[Go to Product page](#)**1** Image

Overview

Quantity:	50 µg
Target:	WIF1
Protein Characteristics:	AA 29-379
Origin:	Human
Source:	Hi-5 Cells
Protein Type:	Recombinant
Purification tag / Conjugate:	This WIF1 protein is labelled with His tag.
Application:	SDS-PAGE (SDS)

Product Details

Characteristics:	Wif-1, 29-379aa, Human, His-tagged, Recombinant, Hi-5 cell
Purity:	> 80 % by SDS - PAGE

Target Details

Target:	WIF1
Alternative Name:	Wif-1 (WIF1 Products)
Background:	Wnt inhibitory factor 1, also known as Wif-1, is a secreted protein that binds to Wnt proteins involved in the embryonic development and cancer, and inhibits their activity. Wif-1 protein contains a WNT inhibitory factor (WIF) domain and 5 epidermal growth factor (EGF)-like domains. It may be involved in mesoderm segmentation. This protein is found to be present in fish, amphibia and mammals. Recombinant human Wif-1 protein, fused to His-tag at C-

Target Details

terminus, was expressed in Hi-5 cell using baculovirus expression system and purified by using conventional chromatography. Synonyms: Wnt inhibitory factor 1, WIF1, Wnt inhibitory factor 1. NCBI no.: NM_007191

Molecular Weight: 40.5 kDa (369 aa)

Pathways: [WNT Signaling, Positive Regulation of fat Cell Differentiation](#)

Application Details

Restrictions: For Research Use only

Handling

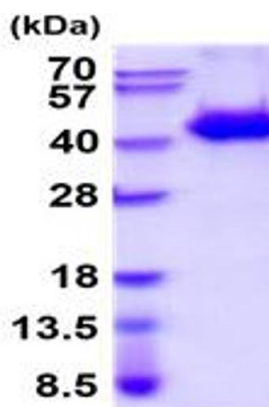
Format: Liquid

Concentration: 0.20mg/ml (determined by Bradford assay)

Buffer: Liquid. In PBS (pH 7.4) containing 10% glycerol, 1mM PMSF

Storage: 4 °C

Images



15% SDS-PAGE (3µg)

SDS-PAGE

Image 1.