

Datasheet for ABIN666767

PINX1 Protein (AA 1-328) (His tag)[Go to Product page](#)**1** Image

Overview

Quantity:	100 µg
Target:	PINX1
Protein Characteristics:	AA 1-328
Origin:	Human
Source:	Escherichia coli (E. coli)
Protein Type:	Recombinant
Purification tag / Conjugate:	This PINX1 protein is labelled with His tag.
Application:	SDS-PAGE (SDS)

Product Details

Characteristics:	PINX1, 1-328aa, Human, His-tagged, Recombinant, E.coli
Purity:	> 95 % by SDS - PAGE

Target Details

Target:	PINX1
Alternative Name:	PINX1 (PINX1 Products)
Background:	PINX1 (PIN2-interacting protein 1) is a ubiquitously expressed protein that localizes to nucleoli and telomere speckles. This protein contains a TID (telomerase inhibiting domain) domain which is capable of binding MCRS1, TERT and TERF1. PINX1 has been shown to be a potent telomerase inhibitor and putative tumor suppressor. Recombinant human PINX1, fused to His-tag at N-terminus, was expressed in E.coli and purified by using conventional chromatography.

Target Details

Synonyms: PIN2-interacting protein 1, TRF1-interacting protein 1, Liver-related putative tumor suppressor, Protein 67-11-3, LPTL, LPTS, PINX1, PIN2-interacting protein 1 67-11-3 protein PIN2 interacting protein 1, Hepatocellular carcinoma-related putative tumor suppressor,. NCBI no.: NP_060354

Molecular Weight: 39.1 kDa (348aa), confirmed by MALDI-TOF.

Application Details

Restrictions: For Research Use only

Handling

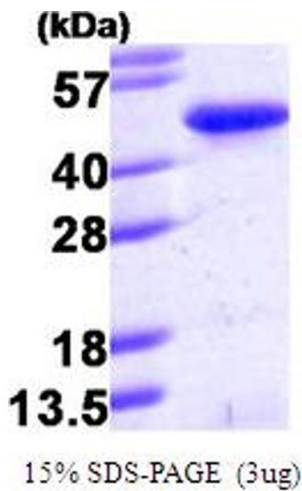
Format: Liquid

Concentration: 1 mg/ml (determined by Bradford assay)

Buffer: : Liquid. In 20 mM Tris-HCl buffer (pH 8.0) containing, 1mM DTT, 10% glycerol

Storage: 4 °C

Images



SDS-PAGE

Image 1.