



[Go to Product page](#)

Datasheet for ABIN666770

## BMF Protein (AA 1-129) (T7 tag)

### 1 Image

#### Overview

Quantity:	100 µg
Target:	BMF
Protein Characteristics:	AA 1-129
Origin:	Human
Source:	Escherichia coli (E. coli)
Protein Type:	Recombinant
Purification tag / Conjugate:	This BMF protein is labelled with T7 tag.
Application:	SDS-PAGE (SDS)

#### Product Details

Characteristics:	BMF, 1-129aa, Human, T7-tagged, Recombinant, E.coli
Purity:	> 90 % by SDS - PAGE

#### Target Details

Target:	BMF
Alternative Name:	BMF ( <a href="#">BMF Products</a> )
Background:	Bcl2 modifying factor, also known as BMF belongs to the Bcl2 protein family of apoptosis mediators. Bmf is constitutively expressed in many tissues. This protein contains a single Bcl2 homology domain 3 (BH3), and has been shown to bind Bcl2 proteins and function as an apoptotic activator. Also, BMF is a key molecule for histone deacetylase (HDAC) inhibitors which alters the balance between acetylation and deacetylation, significantly increasing histone

## Target Details

acetylation, while strongly inducing apoptosis in a variety of cancer cell types. Recombinant human BMF, fused to T7-tag at N-terminus, was expressed in E.coli and purified by using conventional chromatography. Synonyms: Bcl2 modifying factor, isoform 3, BMF, Bcl2 modifying factor, isoform 3 Bcl 2 modifying factor, FLJ00065. NCBI no.: NP\_001003943

Molecular Weight: 15.6 kDa (144aa), confirmed by MALDI-TOF.

## Application Details

Restrictions: For Research Use only

## Handling

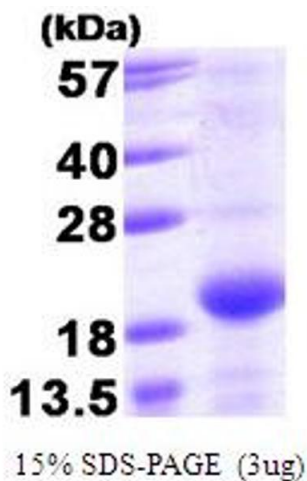
Format: Liquid

Concentration: 1 mg/ml (determined by Bradford assay)

Buffer: Liquid. In 20 mM Tris-HCl buffer (pH 7.5) containing, 1mM DTT, 10% glycerol

Storage: 4 °C

## Images



### SDS-PAGE

Image 1.