



[Go to Product page](#)

Datasheet for ABIN666781

Midkine Protein (AA 21-143) (His tag)

1 Image

Overview

Quantity:	100 µg
Target:	Midkine (MDK)
Protein Characteristics:	AA 21-143
Origin:	Human
Source:	Escherichia coli (E. coli)
Protein Type:	Recombinant
Purification tag / Conjugate:	This Midkine protein is labelled with His tag.
Application:	SDS-PAGE (SDS)

Product Details

Characteristics:	Midkine, 21-143 aa, Human, His-tagged, Recombinant, E.coli
Purity:	> 90 % by SDS - PAGE

Target Details

Target:	Midkine (MDK)
Alternative Name:	Midkine (MDK Products)
Background:	Midkine, also known as Neurite Growth-promoting Factor 2, is a basic heparin-binding growth factor of low molecular weight, a member of the NFGF family whose founding member is pleiotrophin. This protein exhibits neurite outgrowth-promoting activity and may play a role in nervous system development and/or maintenance. Midkine is pleiotropic, capable of exerting activities such as cell proliferation, cell migration, angiogenesis and fibrinolysis. Recombinant

Target Details

human Midkine protein, fused to His-tag at N-terminus, was expressed in E.coli and purified by using conventional chromatography. Synonyms: MDK, MK, NRG2, midkine (neurite growth-promoting factor 2), FLJ27379, Midkine. NCBI no.: NP_002382

Molecular Weight: 15.7 kDa (144aa), confirmed by MALDI-TOF.

Pathways: [RTK Signaling](#), [M Phase](#), [Skeletal Muscle Fiber Development](#)

Application Details

Restrictions: For Research Use only

Handling

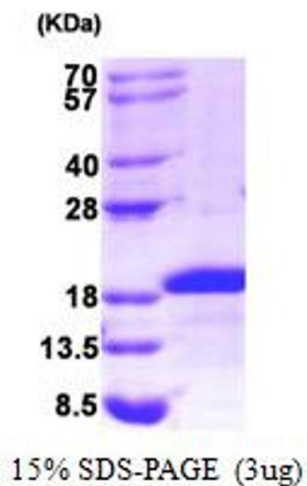
Format: Liquid

Concentration: 0.5 mg/ml (determined by Bradford assay)

Buffer: Liquid. In 20mM Tris-HCl buffer (pH8.0) containing 0.1 M NaCl, 2mM DTT, and 20% Glycerol

Storage: 4 °C

Images



SDS-PAGE

Image 1.