

Datasheet for ABIN666794

CCL3 Protein (AA 24-92) (His tag)[Go to Product page](#)**1** Image

Overview

Quantity:	50 µg
Target:	CCL3
Protein Characteristics:	AA 24-92
Origin:	Human
Source:	Escherichia coli (E. coli)
Protein Type:	Recombinant
Purification tag / Conjugate:	This CCL3 protein is labelled with His tag.
Application:	SDS-PAGE (SDS)

Product Details

Characteristics:	CCL3, 24-92aa, Human, His tag, E.coli
Purity:	> 90 % by SDS - PAGE

Target Details

Target:	CCL3
Alternative Name:	CCL3 (CCL3 Products)
Background:	CCL3, also known as, macrophage inflammatory protein-1 alpha (MIP-1 alpha), is a cytokine belonging to the CC chemokine family that is involved in the acute inflammatory state in the recruitment and activation of polymorphonuclear leukocytes. This protein has been identified as one of the major HIV-SFs produced by CD8+ T cells, along with MIP-1 beta and RANTES. It acts as an inhibitor of different strains of HIV-1, HIV-2 and SIV infection in a dose-dependent

Target Details

manner. Recombinant human CCL3 protein, fused to His-tag at N-terminus, was expressed in E.coli and purified by conventional chromatography, after refolding of the isolated inclusion bodies in a renaturation buffer. Synonyms: C-C motif chemokine 3, G0S19-1, LD78ALPHA. MIP-1-alpha. MIP1A. SCYA3. NCBI no.: NP_002974

Molecular Weight: 10.0 kDa (90aa), confirmed by MALDI-TOF (Molecular weight on SDS-PAGE will appear higher)

Pathways: [Cellular Response to Molecule of Bacterial Origin, Autophagy](#)

Application Details

Restrictions: For Research Use only

Handling

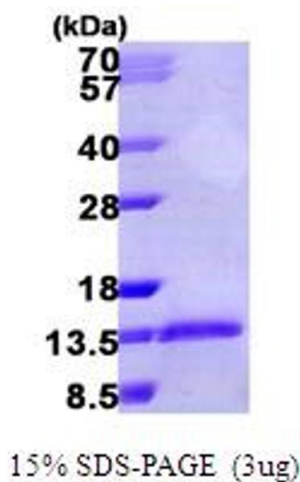
Format: Liquid

Concentration: 0.25 mg/ml (determined by Bradford assay)

Buffer: Liquid. In 10mM Sodium Citrate (pH3.5) containing 10% glycerol

Storage: 4 °C

Images



SDS-PAGE

Image 1.