

Datasheet for ABIN666800
CCL15 Protein (AA 22-113)[Go to Product page](#)

1 Image

Overview

Quantity:	100 µg
Target:	CCL15
Protein Characteristics:	AA 22-113
Origin:	Human
Source:	Escherichia coli (E. coli)
Protein Type:	Recombinant
Application:	SDS-PAGE (SDS)

Product Details

Characteristics:	CCL15, 22-113aa, Human, E.coli
Purity:	> 95 % by SDS - PAGE

Target Details

Target:	CCL15
Alternative Name:	CCL15 (CCL15 Products)
Background:	Chemokine (C-C motif) ligand 15, also known as CCL15, is a small cytokine belonging to the CC chemokine family that is also known as thymus and activation regulated chemokine. CCL15 induces changes in intracellular calcium concentration in monocytes and is thought to act through the CCR1 receptor. This gene expresses both monocistronic and bicistronic transcripts, which encode the same protein. Recombinant human CCL15 protein was expressed in E.coli and purified by using conventional chromatography techniques. Synonyms:

Target Details

	Chemokine (C-C motif) ligand 15, HCC-2, HMRP-2B, Lkn-1, LKN1, MIP-1d, MIP-5NCC-3, NCC3, SCYA15, SCYL3, SY15. NCBI no.: NP_116741
Molecular Weight:	10.3kDa (93aa) confirmed by MALDI-TOF

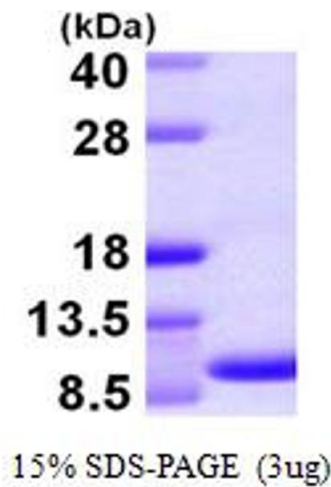
Application Details

Restrictions:	For Research Use only
---------------	-----------------------

Handling

Format:	Liquid
Concentration:	0.5 mg/ml (determined by Bradford assay)
Buffer:	Liquid. In Phosphate buffered saline (pH7.4), 10% glycerol
Storage:	4 °C

Images



SDS-PAGE

Image 1.