

Datasheet for ABIN666802

HTRA2 Protein (full length) (His tag)[Go to Product page](#)**1** Image

Overview

Quantity:	100 µg
Target:	HTRA2
Protein Characteristics:	full length
Origin:	Human
Source:	Escherichia coli (E. coli)
Protein Type:	Recombinant
Purification tag / Conjugate:	This HTRA2 protein is labelled with His tag.
Application:	SDS-PAGE (SDS)

Product Details

Characteristics:	HtrA2/Omi 134-458 Human, Recombinant, His- tagged, E.coli
Purity:	> 95 % by SDS - PAGE

Target Details

Target:	HTRA2
Alternative Name:	HtrA2/Omi 134-458 (HTRA2 Products)
Background:	<p>HtrA2/Omi is a mammalian serine protease at high temperatures and has a chaperone activity at low temperature. The full-length HtrA2 is synthesized as a precursor protein and then targeted to the mitochondria where it is matured by the removal of N-terminal 133 residues.</p> <p>Mature HtrA2 consists of a putative transmembrane domain, an inhibitor of apoptosis protein (IAP)-binding motif, a single C-terminal PDZ domain that mediates protein-protein interactions.</p>

Target Details

Recently, HtrA2 has known to contribute both to caspase-dependent and caspase-independent cell death. Mature form of HtrA2/Omi(residues 134-458) was overexpressed in E.coli, and purified by conventional column chromatography techniques. Synonyms: HTRA2, OMI, PRSS25, HtrA2/Omi, EC 3.4.21.108, High temperature requirement protein A2, HtrA2, Omi stress-regulated endoprotease, Serine proteinase OMI, Serine protease 25, Serine protease HTRA2, mitochondrial, High temperature requirement protein A2. NCBI no.: NP_037379

Molecular Weight: 36kDa (334aa), confirmed by MALDI-TOF.

Pathways: [Positive Regulation of Endopeptidase Activity](#)

Application Details

Restrictions: For Research Use only

Handling

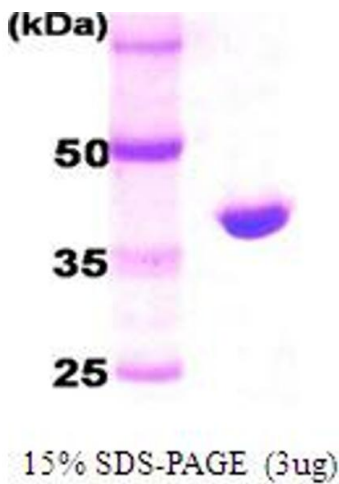
Format: Liquid

Concentration: 0.5 mg/ml (determined by Bradford assay)

Buffer: Liquid. In 20 mM Tris-HCl buffer (pH 8.0), 50 mM NaCl, 1 mM DTT, 20% Glycerol

Storage: 4 °C

Images



SDS-PAGE

Image 1.