

Datasheet for ABIN666875

SNAPIN Protein (AA 1-136) (His tag)[Go to Product page](#)**1** Image

Overview

Quantity:	100 µg
Target:	SNAPIN
Protein Characteristics:	AA 1-136
Origin:	Human
Source:	Escherichia coli (E. coli)
Protein Type:	Recombinant
Purification tag / Conjugate:	This SNAPIN protein is labelled with His tag.
Application:	SDS-PAGE (SDS)

Product Details

Characteristics:	SNAPAP, 1-136aa, Human, His tagged, Recombinant, E.coli
Purity:	> 90 % by SDS - PAGE

Target Details

Target:	SNAPIN
Alternative Name:	SNAPAP (SNAPIN Products)
Background:	SNAPAP (SNAP associated protein) was enriched in neurons and exclusively located on synaptic vesicle membrane protein. SNAPAP is an important component of the neurotransmitter release process through its modulation of the sequential interactions between the SNAREs and synaptotagmin, which is a component of the SNARE complex that is required for synaptic vesicle docking and fusion. Recombinant human SNAPAP protein, fused to His-tag

Target Details

	at N-terminus, was expressed in E.coli and purified by using conventional chromatography techniques. Synonyms: SNAPIN, SNAP25BP, SNAPAP, SNAP associated protein, SNAP associated protein SNARE associated protein snapin, Synaptosomal associated protein 25 binding protein. NCBI no.: NP_036569
Molecular Weight:	17 kDa (156aa), confirmed by MALDI-TOF.
Pathways:	Synaptic Membrane , Synaptic Vesicle Exocytosis

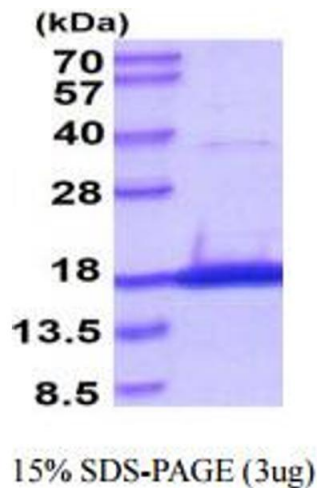
Application Details

Restrictions:	For Research Use only
---------------	-----------------------

Handling

Format:	Liquid
Concentration:	0.5 mg/ml (determined by Bradford assay)
Buffer:	Liquid. In 20 mM Tris-HCl buffer (pH 8.0) containing 5 mM DTT, 2 mM EDTA, 0.2 M NaCl2, 40% glycerol
Storage:	4 °C

Images



SDS-PAGE

Image 1.