

Datasheet for ABIN666880

C19orf10 Protein (AA 33-173) (His tag)[Go to Product page](#)**1** Image

Overview

Quantity:	100 µg
Target:	C19orf10
Protein Characteristics:	AA 33-173
Origin:	Human
Source:	Escherichia coli (E. coli)
Protein Type:	Recombinant
Purification tag / Conjugate:	This C19orf10 protein is labelled with His tag.
Application:	SDS-PAGE (SDS)

Product Details

Characteristics:	SF20/IL25, 33-173aa, Human, His-Tagged, Recombinant, E.coli
Purity:	> 95 % by SDS - PAGE

Target Details

Target:	C19orf10
Alternative Name:	SF20/IL25 (C19orf10 Products)
Background:	SF20/25, originally identified as a product of bone marrow-derived stromal cells, was previously thought to support proliferation of lymphoid cells and was designated as interleukin. However, this activity has not been reproducible and the function of this protein is currently unknown. Recombinant human SF20/IL25 protein, fused to His-tag at N-terminus, was expressed in E.coli and purified by using conventional chromatography techniques, after refolding of the isolated

Target Details

inclusion bodies in a renaturation buffer. Synonyms: C19orf10, IL25, UPF0556, IL27, IL27w, Stromal cell-derived growth factor Chromosome 19 open reading frame 10, EUROIMAGE1875335, IL 25, IL 27, Interleukin 25, Interleukin 27 working designation, Interleukin25, R33729 1, R337291, SF20, Stromal cell derived growth factor, Stromal cell derived growth factor SF20, Uncharacterized protein C19orf10 precursor. NCBI no.: NP_061980

Molecular Weight: 18 kDa (162 aa), confirmed by MALDI-TOF.

Pathways: [ER-Nucleus Signaling](#)

Application Details

Restrictions: For Research Use only

Handling

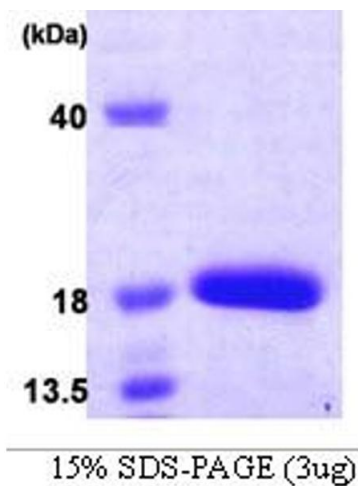
Format: Liquid

Concentration: 1 mg/ml (determined by Bradford assay)

Buffer: Liquid. In 20 mM Tris-HCl buffer (pH 8.0) containing 20% glycerol

Storage: 4 °C

Images



SDS-PAGE

Image 1.