

Datasheet for ABIN666888

UBE2S Protein (AA 1-222) (His tag)[Go to Product page](#)**1** Image

Overview

Quantity:	100 µg
Target:	UBE2S
Protein Characteristics:	AA 1-222
Origin:	Human
Source:	Escherichia coli (E. coli)
Protein Type:	Recombinant
Purification tag / Conjugate:	This UBE2S protein is labelled with His tag.
Application:	SDS-PAGE (SDS)

Product Details

Characteristics:	UBE2S, 1-222 aa, Human, His-tagged, Recombinant, E.coli
Purity:	> 90 % by SDS - PAGE

Target Details

Target:	UBE2S
Alternative Name:	UBE2S (UBE2S Products)
Background:	UBE2S, also known as ubiquitin-conjugating enzyme E2S, is a member of the ubiquitin-conjugating enzyme family. This protein is able to form a thiol ester linkage with ubiquitin in an ubiquitin activating enzyme-dependent manner, a characteristic property of ubiquitin carrier proteins. It catalyzes the covalent attachment of ubiquitin to other proteins. Recombinant UBE2S protein, fused to His-tag at N-terminus, was expressed in E.coli and purified by using

Target Details

conventional chromatography techniques. Synonyms: E2-EPF, E2EPF, EPF5, Ubiquitin-conjugating enzyme E2S AA409170, MGC101982, UBE2S, Ubiquitin carrier protein S, Ubiquitin protein ligase S, Ubiquitin conjugating enzyme E2 24 kD, Ubiquitin conjugating enzyme E2S,.
NCBI no.: NP_055316.2

Molecular Weight: 27.9 kDa (258aa), confirmed by MALDI-TOF.

Pathways: [Ubiquitin Proteasome Pathway](#)

Application Details

Restrictions: For Research Use only

Handling

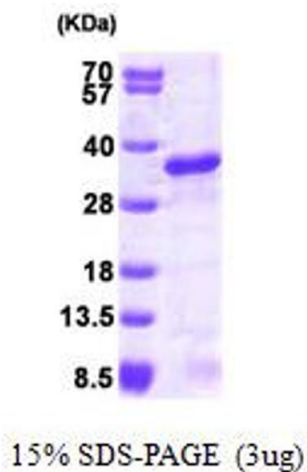
Format: Liquid

Concentration: 1 mg/ml (determined by Bradford assay)

Buffer: Liquid. In 20 mM Tris-HCl buffer (pH8.0) containing 1mM DTT and 20% glycerol

Storage: 4 °C

Images



SDS-PAGE

Image 1.