

Datasheet for ABIN666895

**CDO1 Protein (AA 1-170) (His tag)**[Go to Product page](#)**1** Image

## Overview

Quantity:	100 µg
Target:	CDO1
Protein Characteristics:	AA 1-170
Origin:	Human
Source:	Escherichia coli (E. coli)
Protein Type:	Recombinant
Purification tag / Conjugate:	This CDO1 protein is labelled with His tag.
Application:	SDS-PAGE (SDS)

## Product Details

Characteristics:	Cysteine dioxygenase, 1-170 aa, Human, His-tagged, Recombinant, E.coli
Purity:	> 90 % by SDS-PAGE

## Target Details

Target:	CDO1
Alternative Name:	Cysteine Dioxygenase ( <a href="#">CDO1 Products</a> )
Background:	Cysteine dioxygenase(CDO1) is a mammalian non-heme iron enzyme that initiates several important metabolic pathways related to pyruvate and several sulfurate compounds including sulfate, hypotaurine and taurine. This protein catalyzes the conversion of L-cysteine to cysteine sulfinic acid (cysteine sulfinic acid) by incorporation of dioxygen. CDO1 is critical regulator of cellular cysteine concentrations and has an important role in maintaining the hepatic

Target Details

concentration of intracellular free cysteine within a proper narrow range. Recombinant CDO1 protein was expressed in E.coli and purified by using conventional chromatography techniques.  
Synonyms: CDO1, CDO , CDO 1, CDO I, CDO-1, CDO-I, CDOI, cytosolic cysteine dioxygenase.  
NCBI no.: AAH\_24241

Molecular Weight: 23.9 kDa (207aa), confirmed by MALDI-TOF.

Application Details

Restrictions: For Research Use only

Handling

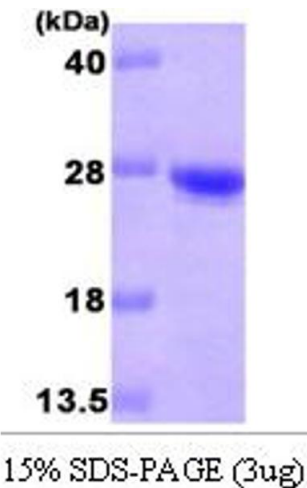
Format: Liquid

Concentration: 1 mg/ml (determined by Bradford assay)

Buffer: Liquid. In 20mM Tris buffer(pH 8.0) containing 10% glycerol, 1mM DTT.

Storage: 4 °C

Images



SDS-PAGE

Image 1.