



[Go to Product page](#)

Datasheet for ABIN666896

RRAS2 Protein (AA 1-201) (His tag)

1 Image

Overview

Quantity:	100 µg
Target:	RRAS2
Protein Characteristics:	AA 1-201
Origin:	Human
Source:	Escherichia coli (E. coli)
Protein Type:	Recombinant
Purification tag / Conjugate:	This RRAS2 protein is labelled with His tag.
Application:	SDS-PAGE (SDS)

Product Details

Characteristics:	RRAS2, 1- 201 aa, Human, His-tagged, Recombinant, E.coli
Purity:	> 95 % by SDS - PAGE

Target Details

Target:	RRAS2
Alternative Name:	RRAS2 (RRAS2 Products)
Background:	RAS viral (r-ras) oncogene homolog 2 isoform a, also known as RRAS2, belongs to the Ras like GTPase family that cycle between GTP-bound active and GDP-bound inactive states at the cytoplasmic face of the plasma membrane. It is implicated in the pathogenesis of human cancers. Thus, overexpression of active RRAS2 in Eph4 cells induces tumorigenicity through the phosphoinositide 3-kinase, p38 MAPK, and mTOR pathways, and these cells lose their

Target Details

sensitivity to the normal growth inhibitory role of TGF-beta. Recombinant human RRAS2, fused to His-tag at N-terminus, was expressed in E.coli and purified by using conventional chromatography techniques. Synonyms: TC21, RAS viral (r-ras) oncogene homolog 2 isoform a C86394, Oncogene RRAS2, Oncogene TC21, Ras like protein TC21, Ras related protein R Ras2, Related RAS viral (r ras) oncogene homolog 2, Related RAS viral oncogene homolog 2, RRAS 2, TC 21, Teratocarcinoma oncogene, Teratocarcinoma oncogene TC21. NCBI no.: NP_036382

Molecular Weight: 25.2 kDa (221aa), confirmed by MALDI-TOF.

Application Details

Restrictions: For Research Use only

Handling

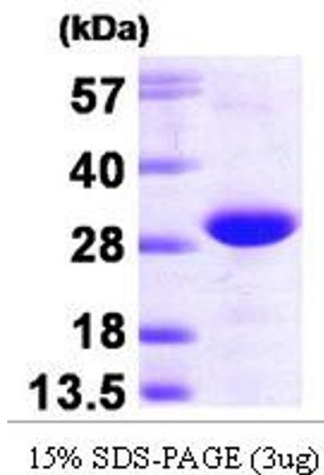
Format: Liquid

Concentration: 0.5 mg/ml (determined by Bradford assay)

Buffer: Liquid. In 20mM Tris-HCl buffer (pH8.0) containing 1mM DTT, 10% glycerol, 2mM EDTA

Storage: 4 °C

Images



SDS-PAGE

Image 1.