

Datasheet for ABIN666909

SMAD3 Protein (AA 1-425) (His tag)[Go to Product page](#)**1** Image

Overview

Quantity:	100 µg
Target:	SMAD3
Protein Characteristics:	AA 1-425
Origin:	Human
Source:	Escherichia coli (E. coli)
Protein Type:	Recombinant
Purification tag / Conjugate:	This SMAD3 protein is labelled with His tag.
Application:	SDS-PAGE (SDS)

Product Details

Characteristics:	SMAD3, 1-425 aa, Human, His-tag, E.coli
Purity:	> 90 % by SDS - PAGE

Target Details

Target:	SMAD3
Alternative Name:	SMAD3 (SMAD3 Products)
Background:	SMAD3, also known as mothers against decapentaplegic homolog 3, belongs to the SMAD family of proteins that mediate signal transduction by the TGF-beta/activin/BMP-2/4 cytokine superfamily from receptor Ser/Thr protein kinases at the cell surface to the nucleus. Small molecule inhibitors of Smad3 may have tremendous clinical potential in the treatment of pathological fibrotic diseases. Recombinant SMAD3 protein was expressed in E.coli and

Target Details

	purified by using conventional chromatography techniques. Synonyms: HSPC193, HsT17436, JV15-2, MADH3, Mothers against decapentaplegic homolog 3 DKFZP586N0721, DKFZp686J10186, hMAD 3, hSMAD3, MAD (mothers against decapentaplegic Drosophila) homolog 3, HST17436, JV15 2, JV152, MAD3, MADH 3, MGC60396, Mothers against DPP homolog 3, SMA and MAD related protein 3, SMAD, SMAD 3, SMAD3,. NCBI no.: NP_005893
Molecular Weight:	50.2 kDa (445aa), confirmed by MALDI-TOF.
Pathways:	Cell Division Cycle , Chromatin Binding , Cell-Cell Junction Organization , Positive Regulation of Endopeptidase Activity , Autophagy

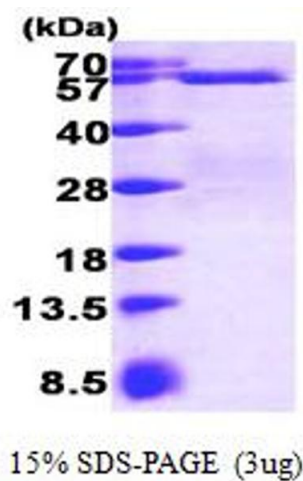
Application Details

Restrictions:	For Research Use only
---------------	-----------------------

Handling

Format:	Liquid
Concentration:	0.5 mg/ml (determined by Bradford assay)
Buffer:	Liquid. In 20mM Tris-HCl buffer (pH8.0) containing 20% glycerol, 0.1M NaCl and 1 mM DTT
Storage:	4 °C

Images



SDS-PAGE

Image 1.