

Datasheet for ABIN666919

Glutaredoxin 2 Protein (GRX2) (AA 20-164) (His tag)[Go to Product page](#)**1** Image

Overview

Quantity:	100 µg
Target:	Glutaredoxin 2 (GRX2)
Protein Characteristics:	AA 20-164
Origin:	Human
Source:	Escherichia coli (E. coli)
Protein Type:	Recombinant
Purification tag / Conjugate:	This Glutaredoxin 2 protein is labelled with His tag.
Application:	SDS-PAGE (SDS)

Product Details

Characteristics:	Glutaredoxin-2, 20-164aa, Human, His tag, E.coli
Purity:	> 90 % by SDS - PAGE

Target Details

Target:	Glutaredoxin 2 (GRX2)
Alternative Name:	Glutaredoxin-2 (GRX2 Products)
Background:	Glutaredoxin-2, as known as GRX2, multifunctional enzyme with glutathione-dependent oxidoreductase, glutathione peroxidase and glutathione S-transferase(GST) activity. This protein is localized both in the mitochondria and nucleus. It has anti-apoptotic activity by preventing cardiolipin oxidation and cytochrome c release. GRX2 exhibited 36% identity with GRX1 and had a disulfide active center containing the Cys-Ser-Tyr-Cys motif. Recombinant

Target Details

human Glutaredoxin 2, fused to His-tag at C-terminus, was expressed in E.coli and purified by using conventional chromatography. Synonyms: GLRX2, GRX2, CGI133. NCBI no.: NP_932066

Molecular Weight: 17.0 kDa (154aa), confirmed by MALDI-TOF.

Pathways: [Cell RedoxHomeostasis](#)

Application Details

Restrictions: For Research Use only

Handling

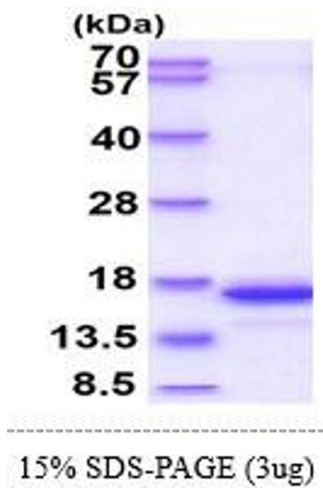
Format: Liquid

Concentration: 0.5 mg/ml (determined by Bradford assay)

Buffer: Liquid. In 20 mM Tris-HCl Buffer (pH 8.0) containing 0.1 mM PMSF, 10% Glycerol

Storage: 4 °C

Images



SDS-PAGE

Image 1.