



[Go to Product page](#)

Datasheet for ABIN666922
GSTA1 Protein (AA 1-222)

1 Image

Overview

Quantity:	100 µg
Target:	GSTA1
Protein Characteristics:	AA 1-222
Origin:	Human
Source:	Escherichia coli (E. coli)
Protein Type:	Recombinant
Application:	SDS-PAGE (SDS)

Product Details

Characteristics:	GSTA1, 1-222aa, Human, E.coli
Purity:	> 90 % by SDS - PAGE

Target Details

Target:	GSTA1
Alternative Name:	GSTA1 (GSTA1 Products)
Background:	<p>GSTA1, also known as Glutathione S-transferase alpha 1, belongs to a glutathione S-transferase alpha class and is the most abundantly expressed in liver. This protein functions in the detoxification of electrophilic compounds, including carcinogens, therapeutic drugs, environmental toxins and products of oxidative stress, by conjugation with glutathione.</p> <p>Recombinant human GSTA1 protein was expressed in E.coli and purified by using conventional chromatography techniques. Synonyms: GST2, GSTA1-1, GTH1, Glutathione S-transferase</p>

Target Details

alpha 1 Glutathione S transferase A1, GST epsilon, GSTA1, GSTA1 1, HA subunit 1. NCBI no.: NP_665683

Molecular Weight: 25.6 kDa (222aa), confirmed by MALDI-TOF.

Application Details

Restrictions: For Research Use only

Handling

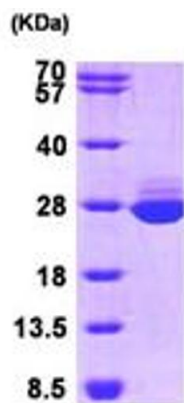
Format: Liquid

Concentration: 1 mg/ml (determined by Bradford assay)

Buffer: Liquid. In 20 mM Tris-HCl buffer (pH8.0) containing 1mM DTT 10% glycerol

Storage: 4 °C

Images



15% SDS-PAGE (3ug)

SDS-PAGE

Image 1.