

Datasheet for ABIN666925
GTF2B Protein (AA 1-316) (His tag)



[Go to Product page](#)

1 Image

Overview

Quantity:	100 µg
Target:	GTF2B
Protein Characteristics:	AA 1-316
Origin:	Human
Source:	Escherichia coli (E. coli)
Protein Type:	Recombinant
Purification tag / Conjugate:	This GTF2B protein is labelled with His tag.
Application:	SDS-PAGE (SDS)

Product Details

Characteristics:	GTF2B, 1-316aa, Human, His tag, E.coli
Purity:	> 90 % by SDS - PAGE

Target Details

Target:	GTF2B
Alternative Name:	GTF2B (GTF2B Products)
Background:	GTF2B, also known as transcription factor II B, is one of several general transcription factors that make up the RNA polymerase II preinitiation complex. It localizes to the nucleus where it forms a complex (the DAB complex) with transcription factors IID and IIA. The protein serves as a bridge between IID, the factor which initially recognizes the promoter sequence, and RNA polymerase II. It is involved in the selection of the transcription start site. Recombinant GTF2B

Target Details

protein was expressed in E.coli and purified by using conventional chromatography techniques.

Synonyms: TF2B, TFIIB, General transcription factor IIB General transcription factor TFIIB, GTF2B, RNA polymerase II transcription factor IIB, S300 II, TF IIB, Transcription initiation factor IIB. NCBI no.: NP_001505

Molecular Weight: 36.9 kDa (336aa), confirmed by MALDI-TOF.

Application Details

Restrictions: For Research Use only

Handling

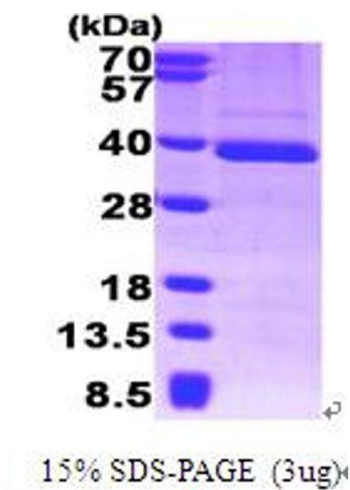
Format: Liquid

Concentration: 0.5 mg/ml (determined by Bradford assay)

Buffer: Liquid. In 20mM Tris-HCl buffer (pH 8.0) containing 10% glycerol, 1mM DTT, 0.1 M NaCl.

Storage: 4 °C

Images



SDS-PAGE

Image 1.