



Datasheet for ABIN666933 OAT Protein (AA 33-439)



[Go to Product page](#)

1 Image

Overview

Quantity:	100 µg
Target:	OAT
Protein Characteristics:	AA 33-439
Origin:	Human
Source:	Escherichia coli (E. coli)
Protein Type:	Recombinant
Application:	SDS-PAGE (SDS)

Product Details

Characteristics:	OAT, 33-439aa, Human, E.coli
Purity:	> 90 % by SDS - PAGE

Target Details

Target:	OAT
Alternative Name:	OAT (OAT Products)

Background: OAT, also known as mitochondrial enzyme ornithine aminotransferase, is a key enzyme in the pathway that converts arginine and ornithine into the major excitatory and inhibitory neurotransmitters glutamate and GABA. (L-ornithine + a 2-oxo acid = L-glutamate 5-semialdehyde + an L-amino acid.) Mutations that result in a deficiency of this enzyme cause the autosomal recessive eye disease Gyrate Atrophy. Recombinant OAT protein was expressed in E.coli and purified by using conventional chromatography techniques. Synonyms:

Target Details

DKFZp781A11155, HOGA, OATASE, ornithine aminotransferase precursor EC 2.6.1.13, ornithine aminotransferase (gyrate atrophy), ornithine aminotransferase precursor, Ornithine aminotransferase, mitochondrial precursor, Ornithine oxo-acid aminotransferase, Ornithine--oxo-acid aminotransferase. NCBI no.: NP_000265

Molecular Weight: 45.2 kDa (408aa), confirmed by MALDI-TOF.

Application Details

Restrictions: For Research Use only

Handling

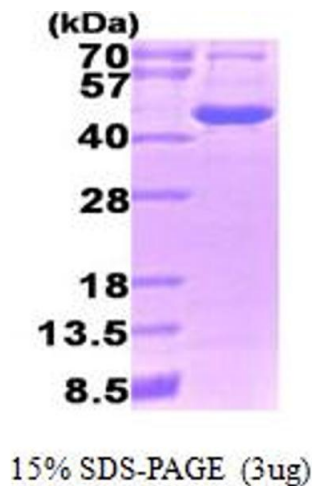
Format: Liquid

Concentration: 1.0 mg/ml (determined by Bradford assay)

Buffer: Liquid. 20mM Tris-HCl buffer (pH8.0) containing 10% glycerol

Storage: 4 °C

Images



SDS-PAGE

Image 1.