



[Go to Product page](#)

Datasheet for ABIN666934

PRPS1 Protein (AA 1-318) (His tag)

1 Image

Overview

Quantity:	100 µg
Target:	PRPS1
Protein Characteristics:	AA 1-318
Origin:	Human
Source:	Escherichia coli (E. coli)
Protein Type:	Recombinant
Purification tag / Conjugate:	This PRPS1 protein is labelled with His tag.
Application:	SDS-PAGE (SDS)

Product Details

Characteristics:	PRPS1, 1-318aa, Human, His tag, E.coli
Purity:	> 90 % by SDS - PAGE

Target Details

Target:	PRPS1
Alternative Name:	PRPS1 (PRPS1 Products)
Background:	PRPS1, also known as ribose-phosphate pyrophosphokinase 1, is ubiquitously expressed in human tissues. This enzyme catalyzes the phosphoribosylation of ribose 5-phosphate to 5-phosphoribosyl-1-pyrophosphate, which is necessary for purine metabolism and nucleotide biosynthesis. Recombinant human PRPS1 protein, fused to His-tag at N-terminus, was expressed in E.coli and purified by using conventional chromatography techniques. Synonyms:

Target Details

ARTS, CMTX5, PPRibP, PRSI, DFN2, DFNX1, Ribose-phosphate pyrophosphokinase 1 EC 2.7.6.1, KIAA0967, Phosphoribosyl pyrophosphate synthetase I, PRS I, PRS-I, Ribose phosphate pyrophosphokinase I., NCBI no.: NP_002755

Molecular Weight: 36.9 kDa (338aa), confirmed by MALDI-TOF.

Pathways: [Ribonucleoside Biosynthetic Process](#)

Application Details

Restrictions: For Research Use only

Handling

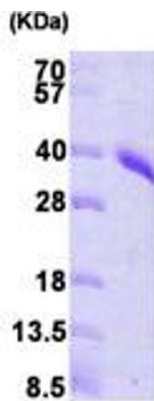
Format: Liquid

Concentration: 0.5 mg/ml (determined by Bradford assay)

Buffer: Liquid. In 20 mM Tris-HCl buffer (pH8.0) containing 1mM DTT, 0.1 M NaCl, and 20% glycerol

Storage: 4 °C

Images



15% SDS-PAGE (3ug)

SDS-PAGE

Image 1.