



[Go to Product page](#)

Datasheet for ABIN666943

ALDOA Protein (AA 1-364) (His tag)

1 Image

Overview

Quantity:	100 µg
Target:	ALDOA
Protein Characteristics:	AA 1-364
Origin:	Human
Source:	Escherichia coli (E. coli)
Protein Type:	Recombinant
Purification tag / Conjugate:	This ALDOA protein is labelled with His tag.
Application:	SDS-PAGE (SDS)

Product Details

Characteristics:	Aldolase A, 1-364aa, Human, His tag, E. coli
Purity:	> 95 % by SDS - PAGE

Target Details

Target:	ALDOA
Alternative Name:	Aldolase A (ALDOA Products)
Background:	Fructose biphosphate aldolase A, also known as Aldolase A is a glycolytic enzyme that catalyzes the reversible conversion of fructose-1,6-bisphosphate to glyceraldehyde 3-phosphate and dihydroxyacetone phosphate. It is found in the developing embryo and is produced in even greater amounts in adult muscle. Aldolase A expression is repressed in adult liver, kidney and intestine and similar to aldolase C levels in brain and other nervous tissue.

Target Details

Deficiency has been associated with myopathy and hemolytic anemia. Recombinant human Aldolase A, fused to His-tag at N-terminus, was expressed in E.coli and purified by using conventional chromatography techniques. Synonyms: ALDOA, ALDA, GSD12, Fructose bisphosphate aldolase A Aldolase A, Aldolase A fructose bisphosphatase, Aldolase A fructose bisphosphate, Fructose 1 6 bisphosphate triosephosphate lyase, Fructose bisphosphate aldolase, Lung cancer antigen NY LU 1, MGC10942, MGC17716, MGC17767, Muscle type aldolase,. NCBI no.: NP_908930

Molecular Weight: 41.5 kDa (384aa), confirmed by MALDI-TOF.

Pathways: [Ribonucleoside Biosynthetic Process](#)

Application Details

Restrictions: For Research Use only

Handling

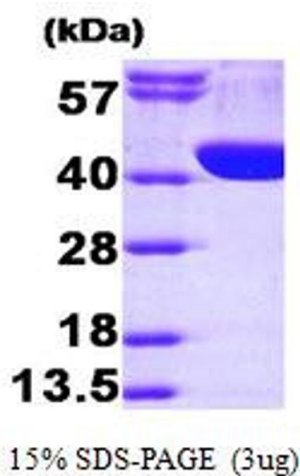
Format: Liquid

Concentration: 1 mg/ml (determined by Bradford assay)

Buffer: Liquid. In 20mM Tris-HCl buffer (pH8.0) containing 100mM NaCl, 10% glycerol

Storage: 4 °C

Images



SDS-PAGE

Image 1.