

Datasheet for ABIN666953
FKBP3 Protein (AA 1-224)[Go to Product page](#)

1 Image

Overview

Quantity:	100 µg
Target:	FKBP3
Protein Characteristics:	AA 1-224
Origin:	Human
Source:	Escherichia coli (E. coli)
Protein Type:	Recombinant
Application:	SDS-PAGE (SDS)

Product Details

Characteristics:	FKBP3, 1-224aa, Human, E.coli
Purity:	> 90 % by SDS - PAGE

Target Details

Target:	FKBP3
Alternative Name:	FKBP3 (FKBP3 Products)
Background:	FK506 binding protein 3 (FKBP3), also known as FKBP25, is a member of the immunophilin protein family, which play a role in immunoregulation and basic cellular processes involving protein folding and trafficking. FKBP3 associates with transcriptional repressor protein YY1 and histone deacetylases, HDAC1 and HDAC2. Also, FKBP3 may contain several casein kinase II phosphorylation sites, which are believed to be important for cell growth regulation. It is localized in the nucleus and is expressed in the brain, testis, ovary, and spleen. Recombinant

Target Details

human FKBP3 was expressed in E.coli and purified by using conventional chromatography techniques. Synonyms: FKBP25, PPlase FKBP3, Rotamase, FK506 binding protein 3 FKBP 25, FKBP 3, PPlase, Rotamase. NCBI no.: NP_002004

Molecular Weight: 25.1 kDa (224aa), confirmed by MALDI-TOF.

Application Details

Restrictions: For Research Use only

Handling

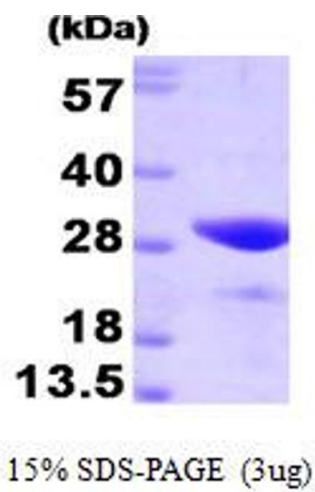
Format: Liquid

Concentration: 1 mg/ml (determined by Bradford assay)

Buffer: Liquid. In 20mM Tris-HCl buffer (pH8.0) containing 1mM DTT, 10% glycerol

Storage: 4 °C

Images



SDS-PAGE

Image 1.