

Datasheet for ABIN666982

MAGOH Protein (AA 1-146) (His tag)[Go to Product page](#)**1** Image

Overview

Quantity:	100 µg
Target:	MAGOH
Protein Characteristics:	AA 1-146
Origin:	Human
Source:	Escherichia coli (E. coli)
Protein Type:	Recombinant
Purification tag / Conjugate:	This MAGOH protein is labelled with His tag.
Application:	SDS-PAGE (SDS)

Product Details

Characteristics:	MAGOH, 1-146 aa, Human, His-tagged, Recombinant, E.coli
Purity:	> 90 % by SDS - PAGE

Target Details

Target:	MAGOH
Alternative Name:	MAGOH (MAGOH Products)
Background:	MAGOH, the human homolog of <i>Drosophila mago nashi</i> , is required for embryo development. MAGOH is ubiquitously expressed in adult tissues. In mammals, mRNA expression is not limited to the germ plasm, but is expressed ubiquitously in adult tissues and can be induced by serum stimulation of quiescent fibroblasts. Recombinant human MAGOH protein, fused to His-tag at C-terminus, was expressed in <i>E.coli</i> and purified by using conventional chromatography

Target Details

techniques. Synonyms: MAGOH1, MAGOHA, Protein mago nashi homolog Mago nashi homolog proliferation associated (Drosophila), Mago nashi protein homolog. NCBI no.: NP_002361

Molecular Weight: 18.2 kDa (154aa), confirmed by MALDI-TOF

Application Details

Restrictions: For Research Use only

Handling

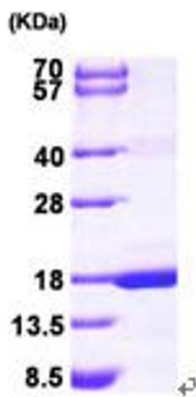
Format: Liquid

Concentration: 0.5 mg/ml (determined by Bradford assay)

Buffer: Liquid. In 20 mM Tris-HCl buffer (pH8.0) containing 2mM DTT, 0.1M NaCl, 20% glycerol

Storage: 4 °C

Images



15% SDS-PAGE (3ug)

SDS-PAGE

Image 1.