

Datasheet for ABIN666987

**GLRX5 Protein (AA 1-157) (His tag)**[Go to Product page](#)**1** Image

## Overview

Quantity:	100 µg
Target:	GLRX5
Protein Characteristics:	AA 1-157
Origin:	Human
Source:	Escherichia coli (E. coli)
Protein Type:	Recombinant
Purification tag / Conjugate:	This GLRX5 protein is labelled with His tag.
Application:	SDS-PAGE (SDS)

## Product Details

Characteristics:	GLRX5, 1-157aa, Human, His tag, E.coli
Purity:	> 85 % by SDS - PAGE

## Target Details

Target:	GLRX5
Alternative Name:	GLRX5 ( <a href="#">GLRX5 Products</a> )
Background:	GLRX5 is small redox enzymes of approximately one hundred amino-acid residues which uses glutathione as a cofactor. This protein is oxidized by substrates, and reduced non-enzymatically by glutathione. It is involved in the biogenesis of iron-sulfur clusters, which are required for normal iron homeostasis. Recombinant human GLRX5 protein, fused to His-tag at N-terminus, was expressed in E.coli and purified by using conventional chromatography techniques.

Target Details

	Synonyms: C14orf87, GRX5, Glutaredoxin-related protein 5, mitochondrial Chromosome 14 open reading frame 87, FLB4739, GLRX 5, Glutaredoxin 5 homolog, Glutaredoxin related protein 5, Glutaredoxin5, GRX5, MGC14129, PRO1238. NCBI no.: NP_057501
Molecular Weight:	18.8 kDa (177aa), confirmed by MALDI-TOF
Pathways:	<a href="#">Cell RedoxHomeostasis</a>

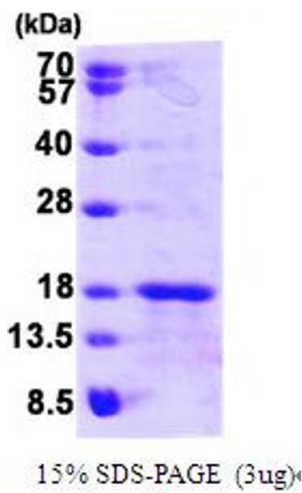
Application Details

Restrictions:	For Research Use only
---------------	-----------------------

Handling

Format:	Liquid
Concentration:	0.5 mg/ml (determined by Bradford assay)
Buffer:	Liquid. 20mM Tris-HCl buffer (pH8.0) containing 20% glycerol, 0.1M NaCl
Storage:	4 °C

Images



SDS-PAGE

Image 1.