

Datasheet for ABIN666991

CRYZL1 Protein (AA 1-349) (His tag)[Go to Product page](#)**1** Image

Overview

Quantity:	100 µg
Target:	CRYZL1
Protein Characteristics:	AA 1-349
Origin:	Human
Source:	Escherichia coli (E. coli)
Protein Type:	Recombinant
Purification tag / Conjugate:	This CRYZL1 protein is labelled with His tag.
Application:	SDS-PAGE (SDS)

Product Details

Characteristics:	CRYZL1, 1-349aa, Human, His tag, E.coli
Purity:	> 95 % by SDS - PAGE

Target Details

Target:	CRYZL1
Alternative Name:	CRYZL1 (CRYZL1 Products)
Background:	CRYZL1, also known as quinone oxidoreductase, is a protein that has sequence similarity to zeta crystalline. This Protein is present at low levels in human lens tissue. It has NADPH-dependent quinone reductase activity distinct from other known quinone reductases, and may play a role as a pH response element-binding protein. CRYZL1 is expressed at various levels in heart, brain, skeletal muscle, kidney, pancreas, liver and lung. Recombinant human CRYZL1

Target Details

protein, fused to His-tag at N-terminus, was expressed in E.coli and purified by using conventional chromatography techniques. Synonyms: 4P11, QOH-1, Quinone oxidoreductase-like protein 1 QOH 1, QOH1, Quinone oxidoreductase like 1, Quinone reductase like 1, Zeta crystallin homolog,. NCBI no.: NP_665857

Molecular Weight: 40.8 kDa (369aa), confirmed by MALDI-TOF

Application Details

Restrictions: For Research Use only

Handling

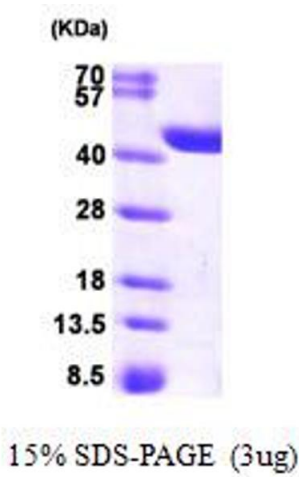
Format: Liquid

Concentration: 0.5 mg/ml (determined by Bradford assay)

Buffer: Liquid. In 20 mM Tris-HCl buffer (pH8.0) containing 2mM DTT, 0.1M NaCl, 20% glycerol

Storage: 4 °C

Images



SDS-PAGE
Image 1.