

Datasheet for ABIN666995

**RAB27A Protein (AA 1-221) (His tag)**[Go to Product page](#)**1** Image

## Overview

Quantity:	100 µg
Target:	RAB27A
Protein Characteristics:	AA 1-221
Origin:	Human
Source:	Escherichia coli (E. coli)
Protein Type:	Recombinant
Purification tag / Conjugate:	This RAB27A protein is labelled with His tag.
Application:	SDS-PAGE (SDS)

## Product Details

Characteristics:	RAB27A, 1-221aa, Human, His tag, E.coli
Purity:	> 90 % by SDS - PAGE

## Target Details

Target:	RAB27A
Alternative Name:	RAB27A ( <a href="#">RAB27A Products</a> )
Background:	Ras-related protein Rab-27A, also known as RAB27A, belongs to the small GTPase superfamily, Rab family. The protein is membrane-bound and may be involved in protein transport and small GTPase mediated signal transduction. Also, RAB27A regulates the cytotoxic granule exocytosis and affect T-lymphocyte and macrophage-activation. It is widely expressed with significant expression in pancreatic islets and pituitary tissue, and low expression in brain. Defects in

## Target Details

RAB27A cause Griscelli syndrome type 2 (GS2). Recombinant human RAB27A, fused to His-tag at N-terminus, was expressed in E.coli and purified by using conventional chromatography techniques. Synonyms: GS2, RAM, RAB27, Ras-related protein Rab-27A GTP-binding protein Ram, HsT18676.MGC117246, Rab-27, RAB27A, member RAS oncogene family, Ras-related protein Rab27A. NCBI no.: NP\_899059

Molecular Weight: 27 kDa (241 aa), confirmed by MALDI-TOF

Pathways: [Peptide Hormone Metabolism](#)

## Application Details

Restrictions: For Research Use only

## Handling

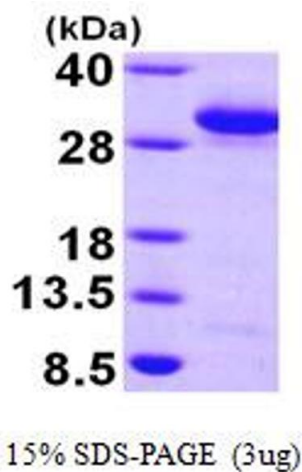
Format: Liquid

Concentration: 1 mg/ml (determined by Bradford assay)

Buffer: Liquid. In 20mM Tris-HCl buffer (pH 8.0) containing 1mM DTT, 20% glycerol

Storage: 4 °C

## Images



### SDS-PAGE

Image 1.