

Datasheet for ABIN667009

Sonic Hedgehog Protein (SHH) (AA 24-197) (His tag)[Go to Product page](#)**1** Image

Overview

Quantity:	100 µg
Target:	Sonic Hedgehog (SHH)
Protein Characteristics:	AA 24-197
Origin:	Human
Source:	Escherichia coli (E. coli)
Protein Type:	Recombinant
Purification tag / Conjugate:	This Sonic Hedgehog protein is labelled with His tag.
Application:	SDS-PAGE (SDS)

Product Details

Characteristics:	SHH, 24-197aa, Human, His tag, E.coli
Purity:	> 95 % by SDS - PAGE

Target Details

Target:	Sonic Hedgehog (SHH)
Alternative Name:	SHH (SHH Products)
Background:	SHH, also known as Sonic hedgehog protein, is one of three proteins in the mammalian signaling pathway family called hedgehog. It plays a key role in regulating vertebrate organogenesis, such as in the growth of digits on limbs and organization of the brain. It controls cell division of adult stem cells and has been implicated in development of some cancers. Recombinant human SHH protein, fused to His-tag at C-terminus was expressed in

Target Details

E.coli and purified by using conventional chromatography techniques. Synonyms: HHG1, HLP3, HPE3, SMMCI, TPT, TPTPS, Sonic hedgehog protein HHG 1, HLP 3, Holoprosencephaly 3, HPE 3, MCOPCB5, SHH, SMMC I , SMMCI, Sonic Hedgehog (Drosophila) homolog, sonic hedgehog homolog (Drosophila), Sonic hedgehog homolog,. NCBI no.: NP_000184

Molecular Weight: 20.7 kDa (183aa) confirmed by MALDI-TOF

Pathways: [Hedgehog Signaling](#), [Dopaminergic Neurogenesis](#), [Regulation of Muscle Cell Differentiation](#), [Tube Formation](#), [Skeletal Muscle Fiber Development](#)

Application Details

Restrictions: For Research Use only

Handling

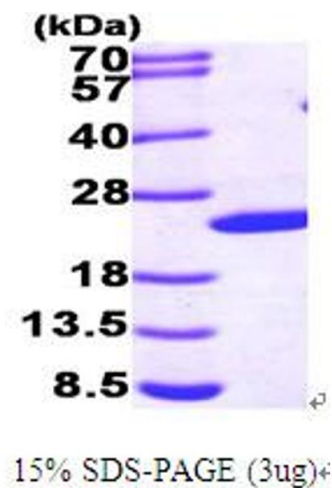
Format: Liquid

Concentration: 1.0 mg/ml (determined by Bradford assay)

Buffer: Liquid. 20mM Tris-HCl buffer (pH8.0) containing 10% glycerol 0.1M NaCl

Storage: 4 °C

Images



SDS-PAGE

Image 1.