

Datasheet for ABIN667015

CRYBB1 Protein (AA 1-252) (His tag)[Go to Product page](#)**1** Image

Overview

Quantity:	100 µg
Target:	CRYBB1
Protein Characteristics:	AA 1-252
Origin:	Human
Source:	Escherichia coli (E. coli)
Protein Type:	Recombinant
Purification tag / Conjugate:	This CRYBB1 protein is labelled with His tag.
Application:	SDS-PAGE (SDS)

Product Details

Characteristics:	CRYBB1, 1-252aa, Human, His tag, E.coli
Purity:	> 90 % by SDS-PAGE

Target Details

Target:	CRYBB1
Alternative Name:	CRYBB1 (CRYBB1 Products)
Background:	<p>Crystallins are the major structural proteins of the vertebrate eye lens, where they maintain the transparency and refractive index of the lens. Crystallins are divided into alpha, beta, and gamma families. Since lens central fiber cells lose their nuclei during development, these crystallins are made and then retained throughout life, making them extremely stable proteins.</p> <p>CRYBB1 is a beta basic group member and undergoes extensive cleavage at its N-terminal</p>

Target Details

extension during lens maturation. Recombinant human CRYBB1 protein, fused to His-tag at C-terminus was expressed in E.coli and purified by using conventional chromatography techniques. Synonyms: CATCN3., Beta-crystallin B1 Beta crystallin B1, CRYBB 1, CRYBB1, Crystallin beta B1, Eye lens structural protein, OTTHUMP00000028719. NCBI no.: NP_001878

Molecular Weight: 29.1 kDa (260aa) confirmed by MALDI-TOF

Application Details

Restrictions: For Research Use only

Handling

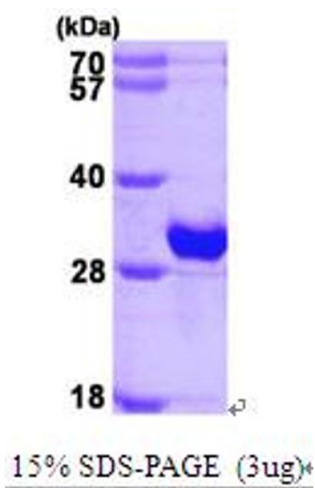
Format: Liquid

Concentration: 1 mg/ml (determined by Bradford assay)

Buffer: Liquid. In 20mM Tris-HCl buffer(pH 8.0) containing 10% glycerol 1mM DTT.

Storage: 4 °C

Images



SDS-PAGE
Image 1.