



[Go to Product page](#)

Datasheet for ABIN667023

## CHP Protein (AA 1-195) (His tag)

### 1 Image

#### Overview

Quantity:	100 µg
Target:	CHP
Protein Characteristics:	AA 1-195
Origin:	Human
Source:	Escherichia coli (E. coli)
Protein Type:	Recombinant
Purification tag / Conjugate:	This CHP protein is labelled with His tag.
Application:	SDS-PAGE (SDS)

#### Product Details

Characteristics:	CHP, 1-195aa, Human, His tag, E.coli
Purity:	> 95 % by SDS - PAGE

#### Target Details

Target:	CHP
Alternative Name:	CHP ( <a href="#">CHP Products</a> )
Background:	CHP (Calcium-binding protein P22) is a phosphoprotein that binds to the sodium-hydrogen exchangers (NHEs). This protein serves as an essential cofactor which supports the physiological activity of NHE family members. It has protein sequence similarity to calcineurin B and it is also known to be an endogenous inhibitor of calcineurin activity. Recombinant human CHP, fused to His-tag at N-terminus, was expressed in E.coli and purified by using conventional

## Target Details

chromatography. Synonyms: SLC9A1BP, Calcineurin B homolog, Calcineurin homologous protein, Calcium-binding protein p22, Calcium binding protein CHP, Sid 470, Sid470, SLC9A1 binding protein, Wrch2. NCBI no.: NP\_009167

Molecular Weight: 24.7 kDa(216aa), confirmed by MALDI-TOF

Pathways: [Proton Transport](#), [Regulation of Carbohydrate Metabolic Process](#), [VEGF Signaling](#)

## Application Details

Restrictions: For Research Use only

## Handling

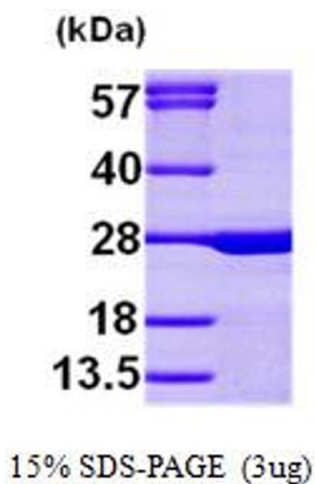
Format: Liquid

Concentration: 1 mg/ml (determined by Bradford assay)

Buffer: Liquid. In 20 mM Tris-HCl Buffer (pH 7.5) containing 10% Glycerol

Storage: 4 °C

## Images



### SDS-PAGE

Image 1.