



[Go to Product page](#)

Datasheet for ABIN667031

K-RAS Protein (AA 1-185) (His tag)

1 Image

Overview

Quantity:	100 µg
Target:	K-RAS (KRAS)
Protein Characteristics:	AA 1-185
Origin:	Human
Source:	Escherichia coli (E. coli)
Protein Type:	Recombinant
Purification tag / Conjugate:	This K-RAS protein is labelled with His tag.
Application:	SDS-PAGE (SDS)

Product Details

Characteristics:	KRAS, 1-185aa, Human, His tag, E.coli
Purity:	> 90 % by SDS - PAGE

Target Details

Target:	K-RAS (KRAS)
Alternative Name:	KRAS (KRAS Products)
Target Type:	Viral Protein
Background:	KRAS is a member of the small GTPase superfamily. This protein is implicated in various malignancies, including lung adenocarcinoma, mucinous adenoma, ductal carcinoma of the pancreas and colorectal carcinoma. Under normal conditions, Ras family members influence cell growth and differentiation events in a subcellular membrane compartmentalization-based

Target Details

signaling system. Oncogenic Ras can deregulate processes that control both cell proliferation and apoptosis. Recombinant human KRAS protein, fused to His-tag at N-terminus, was expressed in E.coli and purified by using conventional chromatography techniques. Synonyms: C-K-RAS, K-RAS2A, K-RAS2B, K-RAS4A, K-RAS4B, KI-RAS, KRAS1, NS3, RASK2, GTPase Kras, K-RAS2A, K RAS2B, K RAS4A, K RAS4B, KI RAS, KRAS 1, NS 3,. NCBI no.: AAH13572

Molecular Weight: 23.2 kDa (205aa) confirmed by MALDI-TOF

Application Details

Restrictions: For Research Use only

Handling

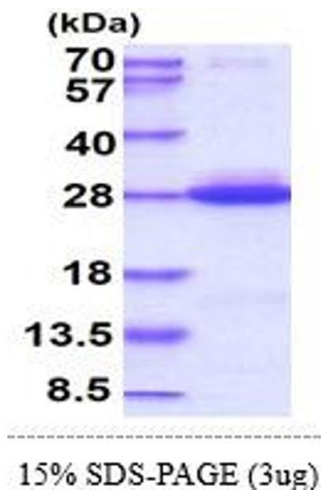
Format: Liquid

Concentration: 0.5 mg/ml (determined by Bradford assay)

Buffer: Liquid. In 20 mM Tris-HCl buffer (pH8.0) containing 0.1M NaCl, 1mM DTT, 10% glycerol

Storage: 4 °C

Images



SDS-PAGE

Image 1.