



[Go to Product page](#)

Datasheet for ABIN667077

## Carbonic Anhydrase Protein (CA) (AA 1-220) (His tag)

### 1 Image

#### Overview

Quantity:	100 µg
Target:	Carbonic Anhydrase (CA)
Protein Characteristics:	AA 1-220
Origin:	E. coli
Source:	Escherichia coli (E. coli)
Protein Type:	Recombinant
Purification tag / Conjugate:	This Carbonic Anhydrase protein is labelled with His tag.
Application:	SDS-PAGE (SDS)

#### Product Details

Characteristics:	Carbonic Anhydrase, 1-220aa, E.coli, His-tagged, Recombinant, E.coli
Purity:	> 95 % by SDS - PAGE

#### Target Details

Target:	Carbonic Anhydrase (CA)
Alternative Name:	Carbonic Anhydrase ( <a href="#">CA Products</a> )
Background:	<p>Carbonic anhydrase (CA) is an enzyme that catalyses rapid conversion of carbon dioxide to bicarbonate and protons (<math>\text{CO}_2 + \text{H}_2\text{O} \leftrightarrow \text{HCO}_3^- + \text{H}^+</math>). Most carbonic anhydrases contain a zinc ion in their active site and the primary function of this enzyme is known to maintain acid-base balance in blood and other tissues, and to help transport carbon dioxide of tissues.</p> <p>Carbonic anhydrases have been found in all kingdoms of life. Recombinant carbonic anhydrase</p>

## Target Details

fused to His-tag, was expressed in E.coli and purified by conventional chromatography techniques. Synonyms: Carbonate dehydratase, CAN, ECK0125, JW0122, yadF, CA 1, CA I, CA1, CAI, Car 1, Car1, Carbonate dehydratase I, Carbonic anhydrase 1, Carbonic anhydrase B. NCBI no.: NP\_414668

Molecular Weight: 27kDa (240aa), confirmed by MALDI-TOF.

## Application Details

Restrictions: For Research Use only

## Handling

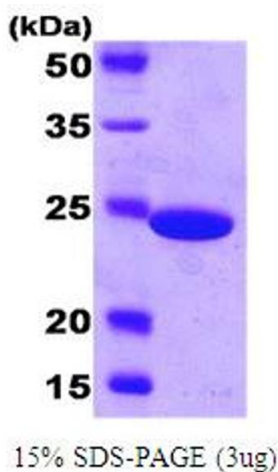
Format: Liquid

Concentration: 1 mg/ml (determined by Bradford assay)

Buffer: Liquid in 20mM Tris pH8.0, 1mM DTT

Storage: 4 °C

## Images



### SDS-PAGE

Image 1.