

Datasheet for ABIN667082

MAT2A Protein (AA 1-395) (His tag)



[Go to Product page](#)

1 Image

Overview

Quantity:	100 µg
Target:	MAT2A
Protein Characteristics:	AA 1-395
Origin:	Human
Source:	Escherichia coli (E. coli)
Protein Type:	Recombinant
Purification tag / Conjugate:	This MAT2A protein is labelled with His tag.
Application:	SDS-PAGE (SDS)

Product Details

Characteristics:	MAT2A, 1-395aa, Human, His tagged, Recombinant, E.coli
Purity:	> 95 % by SDS - PAGE

Target Details

Target:	MAT2A
Alternative Name:	MAT2A (MAT2A Products)
Background:	Methionine adenosyltransferase II (MAT II) is a key enzyme in cellular metabolism and catalyzes the formation of S-adenosylmethionine (SAME) from L-methionine and ATP. MAT2A is expressed in extrahepatic tissues. In liver, MAT2A expression associates with growth, dedifferentiation, and cancer. Recombinant MAT2A, fused to His-tag at N-terminus, was expressed in E.coli and purified by conventional chromatography techniques. Synonyms:

Target Details

MATA2, MATII, SAMS2, Methionine adenosyltransferase II alpha, MAT2A , Methionine adenosyltransferase II, alpha AdoMet synthetase, AdoMet synthetase 2, AMS 2, MAT II, MATA 2, Methionine adenosyltransferase, Methionine adenosyltransferase 2, SAMS 2, Methionine adenosyltransferase II, S adenosylmethionine synthetase gamma form, S adenosylmethionine synthetase isoform type 2, S-adenosylmethionine synthetase isoform type 2. NCBI no.: NP_005902

Molecular Weight: 45.8 kDa (415 aa), confirmed by MALDI-TOF.

Pathways: [Ribonucleoside Biosynthetic Process](#), [Methionine Biosynthetic Process](#)

Application Details

Restrictions: For Research Use only

Handling

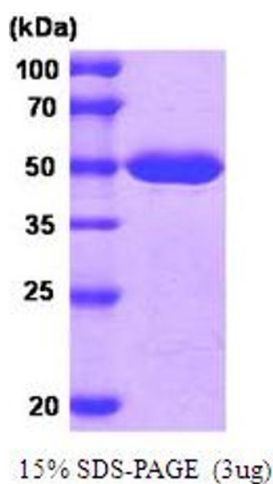
Format: Liquid

Concentration: 1 mg/ml (determined by Bradford assay)

Buffer: Liquid in 20 mM Tris-HCl pH 8.0, 10% Glycerol

Storage: 4 °C

Images



SDS-PAGE

Image 1.