

Datasheet for ABIN667089

MYL2 Protein (AA 1-166) (His tag)[Go to Product page](#)**1** Image

Overview

Quantity:	100 µg
Target:	MYL2
Protein Characteristics:	AA 1-166
Origin:	Human
Source:	Escherichia coli (E. coli)
Protein Type:	Recombinant
Purification tag / Conjugate:	This MYL2 protein is labelled with His tag.
Application:	SDS-PAGE (SDS)

Product Details

Characteristics:	MYL2,1-166 aa, Human, His-tagged, Recombinant, E.coli
Purity:	> 95 % by SDS PAGE

Target Details

Target:	MYL2
Alternative Name:	MYL2 (MYL2 Products)
Background:	Myosin, light chain 2 (MYL2) encodes the regulatory light chain associated with cardiac myosin beta heavy chain. It is an important protein involved in the regulation of myosin ATPase activity in smooth muscle and Ca ⁺ triggers the phosphorylation of regulatory light chain that in turn triggers contraction. Mutations in MYL2 are associated with mid-left ventricular chamber type hypertrophic cardiomyopathy. Recombinant human MYL2 protein, fused to His-tag at N-

Target Details

terminus, was expressed in E.coli and purified by using conventional chromatography techniques. Synonyms: MLC2, CMH10, DKFZp779C0562, Slow cardiac myosin regulatory light chain 2, MYL2, Slow cardiac myosin regulatory light chain 2 Cardiac myosin light chain-2, MLC 2v, MYL 2, Cardiac ventricular myosin light chain 2, RLC of myosin, Myosin light chain 2 regulatory cardiac slow, Myosin light polypeptide 2 regulatory cardiac slow, Myosin regulatory light chain 2 ventricular cardiac muscle isoform, Myosin regulatory light chain 2 ventricular/cardiac muscle isoform, Regulatory light chain of myosin,. NCBI no.: NP_000423

Molecular Weight: 20.9 kDa (186aa), confirmed by MALDI-TOF.

Pathways: [Myometrial Relaxation and Contraction](#)

Application Details

Restrictions: For Research Use only

Handling

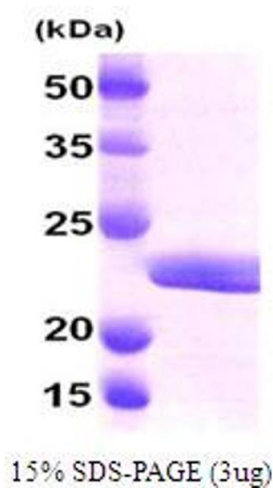
Format: Liquid

Concentration: 0.5 mg/ml (determined by Bradford assay)

Buffer: Liquid in 20mM Tris pH 8.0, 20% glycerol, 5mM CaCl2

Storage: 4 °C

Images



SDS-PAGE

Image 1.