



[Go to Product page](#)

Datasheet for ABIN667092

DDC Protein (AA 1-480) (His tag)

1 Image

Overview

Quantity:	100 µg
Target:	DDC
Protein Characteristics:	AA 1-480
Origin:	Human
Source:	Escherichia coli (E. coli)
Protein Type:	Recombinant
Purification tag / Conjugate:	This DDC protein is labelled with His tag.
Application:	SDS-PAGE (SDS)

Product Details

Characteristics:	Dopa decarboxylase, 1-480 aa Human, His-tagged, Recombinant, E.coli
Purity:	> 95 % by SDS - PAGE

Target Details

Target:	DDC
Alternative Name:	Dopa decarboxylase (DDC Products)
Background:	Dopa decarboxylase, also known as DDC, is a homodimeric, pyridoxal phosphate dependent enzyme. Dopa decarboxylase is a protein implicated in 2 metabolic pathways, synthesizing 2 important neurotransmitters: dopamine and serotonin which both play key roles in many clinical disorders, including Parkinson's disease. Dopa decarboxylase is found in different areas of the brain and is particularly abundant in basal ganglia. Recombinant human Dopa

Target Details

decarboxylase protein, fused to His-tag at N-terminus, was expressed in E.coli and purified by using conventional chromatography. Synonyms: DDC, AADC, Aromatic L-amino acid decarboxylase, L-Dopa decarboxylase, Aromatic L Amino Acid Decarboxylase. NCBI no.: NP_001076440

Molecular Weight: 56.4 kDa (503aa), confirmed by MALDI-TOF.

Pathways: [Dopaminergic Neurogenesis](#)

Application Details

Restrictions: For Research Use only

Handling

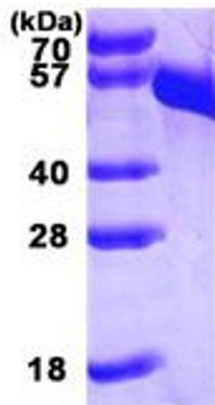
Format: Liquid

Concentration: 1 mg/ml (determined by Bradford assay)

Buffer: Liquid. In 20 mM Tris-HCl buffer (pH 8.0) containing 2mM DTT, 10% glycerol.

Storage: 4 °C

Images



15% SDS-PAGE (3ug)

SDS-PAGE

Image 1.