

Datasheet for ABIN667102

HOMER1 Protein (AA 1-354) (His tag)[Go to Product page](#)**1** Image

Overview

Quantity:	100 µg
Target:	HOMER1
Protein Characteristics:	AA 1-354
Origin:	Human
Source:	Escherichia coli (E. coli)
Protein Type:	Recombinant
Purification tag / Conjugate:	This HOMER1 protein is labelled with His tag.
Application:	SDS-PAGE (SDS)

Product Details

Characteristics:	Homer 1, 1- 354 aa, Human, His-tagged, Recombinant, E.coli
Purity:	> 90 % by SDS - PAGE

Target Details

Target:	HOMER1
Alternative Name:	Homer 1 (HOMER1 Products)
Background:	<p>Homer 1(Homer protein homolog 1) belongs to Homer family of proteins that regulate signal transduction through, and the trafficking of, glutamate receptors, as well as maintain and regulate extracellular glutamate levels in corticolimbic brain regions. The Homer 1 is enriched at excitatory synapses and binds group 1 metabotropic glutamate receptors (mGluRs).</p> <p>Recombinant Homer 1 protein was expressed in E.coli and purified by using conventional</p>

Target Details

chromatography techniques. Synonyms: HOMER, HOMER1A, HOMER1B, HOMER1C, SYN47, Homer protein homolog 1, Homer 1, Homer protein homolog 1 HOMER 1A, HOMER 1B, HOMER 1C, Homer, neuronal immediate early gene, 1, HOMER1, Ves 1,. NCBI no.: NP_004263

Molecular Weight: 44.5 kDa (391 aa), confirmed by MALDI-TOF.

Pathways: [Skeletal Muscle Fiber Development](#)

Application Details

Restrictions: For Research Use only

Handling

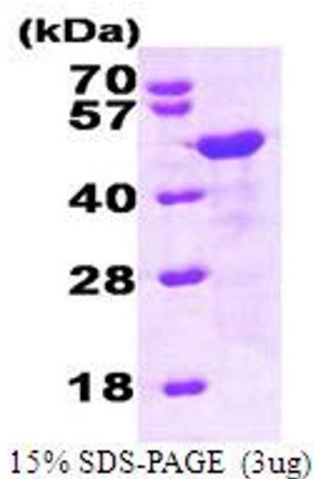
Format: Liquid

Concentration: 1.0 mg/ml (determined by Bradford assay)

Buffer: Liquid. In 20mM Tris-HCl buffer (pH8.0) containing 0.1M NaCl 20% glycerol, and 1 mM DTT

Storage: 4 °C

Images



SDS-PAGE

Image 1.