

Datasheet for ABIN667116

PEDF Protein (AA 20-418) (His tag)[Go to Product page](#)**1** Image

Overview

Quantity:	100 µg
Target:	PEDF (SERPINF1)
Protein Characteristics:	AA 20-418
Origin:	Human
Source:	Escherichia coli (E. coli)
Protein Type:	Recombinant
Purification tag / Conjugate:	This PEDF protein is labelled with His tag.
Application:	SDS-PAGE (SDS)

Product Details

Characteristics:	PEDF, 20-418 aa, Human, His-tagged, Recombinant, E.coli
Purity:	> 85 % by SDS - PAGE

Target Details

Target:	PEDF (SERPINF1)
Alternative Name:	PEDF (SERPINF1 Products)
Background:	<p>PEDF, also known as SERPINF1, is an extracellular neurotrophic agent, first identified as a secreted product in conditioned medium from cultured fetal human retinal pigment epithelial (RPE) cells. It was reported that PEDF isolated from medium conditioned by human fetal RPE primary cultures promotes neurite outgrowth in cultured human retinoblastoma Y-79 cells.</p> <p>PEDF is also a member of the serpin family, a group of serine protease inhibitors. As PEDF does</p>

Target Details

not undergo the S (stressed) to R (relaxed) conformational transition characteristic of active serpins, it exhibits no serine protease inhibitory activity. Recombinant PEDF protein containing a natural variant M72T was expressed in E.coli and purified by using conventional chromatography techniques. Synonyms: Pigment epithelium-derived factor, EPC-1, PIG35, SERPINF1, Pigment epithelium-derived factor EPC 1, EPC1, PIG 35, Pigment epithelium derived factor, Proliferation inducing protein 35, SERPIN F1, Serpin peptidase inhibitor clade F member 1, SERPINF 1,. NCBI no.: NP_000843

Molecular Weight: 46.7 kDa (420 aa), confirmed by MALDI-TOF.

Application Details

Restrictions: For Research Use only

Handling

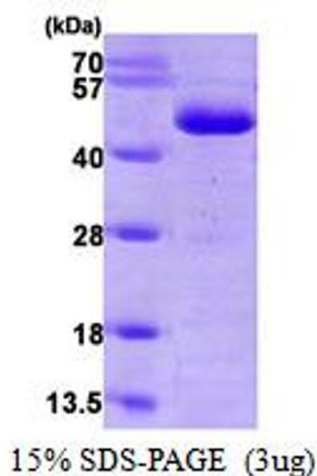
Format: Liquid

Concentration: 0.5 mg/ml (determined by Bradford assay)

Buffer: Liquid. In 20mM Tris-HCl buffer (pH8.0) containing 20% glycerol.

Storage: 4 °C

Images



SDS-PAGE

Image 1.