

Datasheet for ABIN667120

**SAR1A Protein (AA 1-198) (His tag)**[Go to Product page](#)**1** Image

## Overview

Quantity:	100 µg
Target:	SAR1A
Protein Characteristics:	AA 1-198
Origin:	Human
Source:	Escherichia coli (E. coli)
Protein Type:	Recombinant
Purification tag / Conjugate:	This SAR1A protein is labelled with His tag.
Application:	SDS-PAGE (SDS)

## Product Details

Characteristics:	SAR1A, 1- 198 aa,Human, His-tagged, Recombinant, E.coli
Purity:	> 90 % by SDS - PAGE

## Target Details

Target:	SAR1A
Alternative Name:	SAR1A ( <a href="#">SAR1A Products</a> )
Background:	SAR1a gene homolog 1, also known as SAR1A, belongs to the small GTPase superfamily. Sar1 is an essential component of COPII vesicle coats involved in export of cargo from the ER. The GTPase activity of Sar1 functions as a molecular switch to control protein-protein and protein-lipid interactions that direct vesicle budding from the ER. GDP-bound Sar1 interacts with the membrane-bound exchange factor Sec12 and exchanges its bound GDP for GTP. Recombinant

## Target Details

human SAR1A, fused to His-tag at N-terminus, was expressed in E.coli and purified by using conventional chromatography techniques. Synonyms: COPII-associated small GTPase, Masra2, SAR1, Sara, SARA1, SAR1a gene homolog 1 COPII associated small GTPase, GTP binding protein SAR1a, Masra 2, SAR 1, SAR1 gene homolog A, SAR1 homolog A (S. cerevisiae), SAR1A, SAR1a gene homolog (S cerevisiae) 1, SAR1a gene homolog 1 (S cerevisiae), SARA 1. NCBI no.: NP\_064535

Molecular Weight: 24.5 kDa (218aa), confirmed by MALDI-TOF.

## Application Details

Restrictions: For Research Use only

## Handling

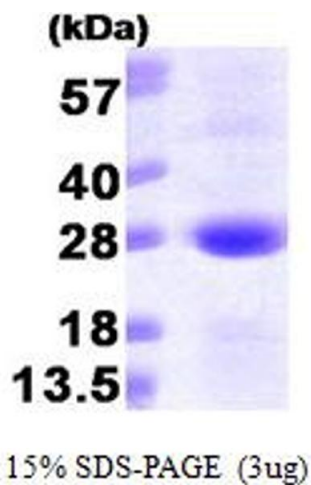
Format: Liquid

Concentration: 1 mg/ml (determined by Bradford assay)

Buffer: Liquid. In 20mM Tris-HCl buffer (pH8.0) containing 1mM DTT, 10% glycerol

Storage: 4 °C

## Images



### SDS-PAGE

Image 1.