

Datasheet for ABIN667129
FKBP2 Protein (AA 22-142)[Go to Product page](#)

1 Image

Overview

Quantity:	50 µg
Target:	FKBP2
Protein Characteristics:	AA 22-142
Origin:	Human
Source:	Escherichia coli (E. coli)
Protein Type:	Recombinant
Application:	SDS-PAGE (SDS)

Product Details

Characteristics:	FKBP2, 22-142aa, Human, E.coli
Purity:	> 90 % by SDS-PAGE

Target Details

Target:	FKBP2
Alternative Name:	FKBP2 (FKBP2 Products)
Background:	<p>FKBP2 is peptidyl proline isomerase enzyme and a member of the immunophilin protein family. This protein is predominantly expressed in thymus and T cells and plays a role in immunoregulation and basic cellular processes involving protein folding and trafficking. It is a cis-trans prolyl isomerase that binds the immunosuppressants FK506 and rapamycin. FKBP2 is thought to function as an ER chaperone and may also act as a component of membrane cytoskeletal scaffolds. Recombinant FKBP2 protein was expressed in E.coli and purified by</p>

Target Details

using conventional chromatography techniques. Synonyms: FKBP-13, PPlase, Peptidyl-prolyl cis-trans isomerase FKBP2 13 kDa FKBP, EC 5.2.1.8, FK506 binding protein 2 (13kD), FK506 binding protein 2 13kDa, FKBP 13, FKBP 2, FKBP13, Peptidyl prolyl cis trans isomerase, Proline isomerase, Rapamycin binding protein, Rotamase. NCBI no.: NP_001128680

Molecular Weight: 13.4 kDa (122aa), confirmed by MALDI-TOF.

Application Details

Restrictions: For Research Use only

Handling

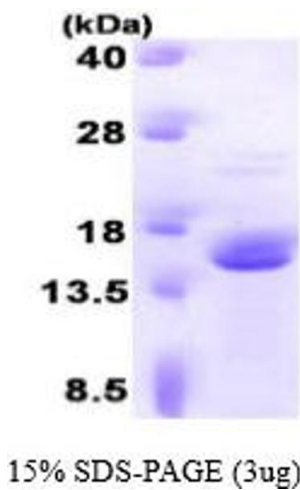
Format: Liquid

Concentration: 1 mg/ml (determined by Bradford assay)

Buffer: Liquid. In 20mM Tris buffer(pH 8.0) containing 10% glycerol, 1mM DTT.

Storage: 4 °C

Images



SDS-PAGE

Image 1.