

Datasheet for ABIN667134

FKBP6 Protein (AA 1-327) (His tag)[Go to Product page](#)**1** Image

Overview

Quantity:	50 µg
Target:	FKBP6
Protein Characteristics:	AA 1-327
Origin:	Human
Source:	Escherichia coli (E. coli)
Protein Type:	Recombinant
Purification tag / Conjugate:	This FKBP6 protein is labelled with His tag.
Application:	SDS-PAGE (SDS)

Product Details

Characteristics:	FKBP6, 1-327aa, Human, His tag, E.coli
Purity:	> 95 % by SDS - PAGE

Target Details

Target:	FKBP6
Alternative Name:	FKBP6 (FKBP6 Products)
Background:	FK506 binding protein 6, also known as FKBP6, is a member of the immunophilin protein family, which play a role in immunoregulation and basic cellular processes involving protein folding and trafficking. Ubiquitously expressed in all tissues, FKBP6 is present at highest levels in testis, liver, kidney, skeletal muscle and heart. Deletion of FKBP6 may contribute to hypercalcemia and growth delay in Williams-Beuren syndrome. Recombinant human FKBP6, fused to His-tag at N-

Target Details

	terminus, was expressed in E.coli and purified by using conventional chromatography techniques. Synonyms: FKBP36, PPlase FKBP6, FK506 binding protein 6, 36kDa 36 kDa FK506 binding protein, EC 5.2.1.8, FK506 binding protein 6, FKBP 36, Immunophilin FKBP36, Peptidyl prolyl cis trans isomerase, PPlase, Rotamase. NCBI no.: NP_003593
Molecular Weight:	39.3 kDa (347aa), confirmed by MALDI-TOF
Pathways:	M Phase

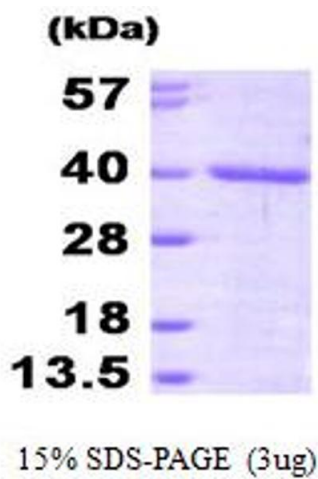
Application Details

Restrictions:	For Research Use only
---------------	-----------------------

Handling

Format:	Liquid
Concentration:	0.5mg/ml (determined by Bradford assay)
Buffer:	Liquid. In 20mM Tris-HCl buffer (pH 8.0) containing 1mM DTT, 40% glycerol, 1mM EDTA, 50mM NaCl
Storage:	4 °C

Images



SDS-PAGE

Image 1.