

Datasheet for ABIN667148

CKB Protein (AA 1-381) (His tag)[Go to Product page](#)**1** Image

Overview

Quantity:	100 µg
Target:	CKB
Protein Characteristics:	AA 1-381
Origin:	Human
Source:	Escherichia coli (E. coli)
Protein Type:	Recombinant
Purification tag / Conjugate:	This CKB protein is labelled with His tag.
Application:	SDS-PAGE (SDS)

Product Details

Characteristics:	CKB, 1-381aa, Human, His tag, E.coli
Purity:	> 95 % by SDS - PAGE

Target Details

Target:	CKB
Alternative Name:	CKB (CKB Products)
Background:	CKB (Creatine kinase B-type) is a cytoplasmic enzyme involved in energy homeostasis. The protein reversibly catalyzes the transfer of phosphate between ATP and various phosphogens such as creatine phosphate. It acts as a homodimer in brain as well as in other tissues, and as a heterodimer with a similar muscle isozyme in heart. Creatine kinases provide the energy of phosphate hydrolysis necessary to drive the normal function of many cellular systems including

Target Details

muscle, tumor and cancer cells. Recombinant human CKB protein, fused to His-tag at N-terminus, was expressed in E.coli and purified by using conventional chromatography technique. Synonyms: B-CK, CKBB, Creatine kinase B-type, BCK. NCBI no.: NP_001814

Molecular Weight: 44.8 kDa (401aa), confirmed by MALDI-TOF

Application Details

Restrictions: For Research Use only

Handling

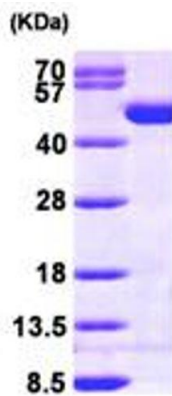
Format: Liquid

Concentration: 1 mg/ml (determined by Bradford assay)

Buffer: Liquid. In 20 mM Tris-HCl buffer (pH8.0) containing 1mM DTT, 10% glycerol

Storage: 4 °C

Images



15% SDS-PAGE (3ug)

SDS-PAGE

Image 1.