



[Go to Product page](#)

Datasheet for ABIN667169

EDF1 Protein (AA 1-148) (His tag)

1 Image

Overview

Quantity:	100 µg
Target:	EDF1
Protein Characteristics:	AA 1-148
Origin:	Human
Source:	Escherichia coli (E. coli)
Protein Type:	Recombinant
Purification tag / Conjugate:	This EDF1 protein is labelled with His tag.
Application:	SDS-PAGE (SDS)

Product Details

Characteristics:	EDF1, 1-148aa, Human, His tag, E.coli
Purity:	> 90 % by SDS - PAGE

Target Details

Target:	EDF1
Alternative Name:	EDF1 (EDF1 Products)
Background:	Endothelial differentiation-related factor 1, also known as EDF1 may regulate endothelial cell differentiation. It has been postulated that the protein functions as a bridging molecule that interconnects regulatory proteins and the basal transcriptional machinery, thereby modulating the transcription of genes involved in endothelial differentiation. Also, EDF1 binds calmodulin thorough its IQ domain and regulates nitric oxide synthase activity through calmodulin

Target Details

sequestration in the cytoplasm. Though ubiquitously expressed, EDF1 is most abundant in adult liver, heart, adipose tissues, intestine and pancreas. Recombinant human EDF1 protein, fused to His-tag at C-terminus, was expressed in E.coli and purified by using conventional chromatography techniques. Synonyms: EDF-1, MBF1, Endothelial differentiation-related factor 1. NCBI no.: NP_003783

Molecular Weight: 17.4 kDa (156aa) confirmed by MALDI-TOF

Application Details

Restrictions: For Research Use only

Handling

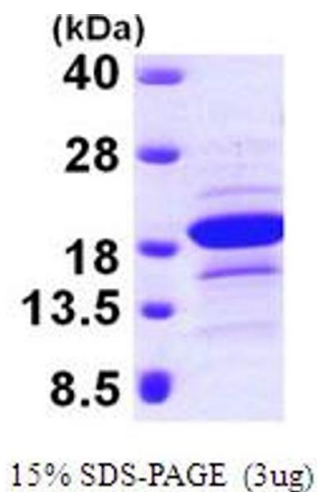
Format: Liquid

Concentration: 0.5 mg/ml (determined by Bradford assay)

Buffer: Liquid. In 20mM Tris-HCl buffer (pH 8.0) containing 1mM DTT, 20% glycerol, 0.1M NaCl

Storage: 4 °C

Images



SDS-PAGE

Image 1.