

Datasheet for ABIN667171

ARL1 Protein (AA 1-181) (His tag)[Go to Product page](#)**1** Image

Overview

Quantity:	100 µg
Target:	ARL1
Protein Characteristics:	AA 1-181
Origin:	Human
Source:	Escherichia coli (E. coli)
Protein Type:	Recombinant
Purification tag / Conjugate:	This ARL1 protein is labelled with His tag.
Application:	SDS-PAGE (SDS)

Product Details

Characteristics:	ARL1, 1-181aa, Human, His tag, E.coli
Purity:	> 95 % by SDS - PAGE

Target Details

Target:	ARL1
Alternative Name:	ARL1 (ARL1 Products)
Background:	ADP-ribosylation factor-like protein 1 (ARL1) belongs to the ARL (ADP-ribosylation factor-like) family of proteins, which are structurally related to ADP-ribosylation factors (ARFs). ARFs, described as activators of cholera toxin (CT) ADP-ribosyltransferase activity, regulate intracellular vesicular membrane trafficking, and stimulate a phospholipase D (PLD) isoform. Although, ARL proteins were initially thought not to activate CT or PLD, later work showed that

Target Details

they are weak stimulators of PLD and CT in a phospholipid dependent manner. Recombinant human ARL1 protein, fused to His-tag at N-terminus, was expressed in E.coli and purified by using conventional chromatography techniques. Synonyms: ARFL1, ADP-ribosylation factor-like protein 1. NCBI no.: NP_001168

Molecular Weight: 22.5kDa (201aa) confirmed by MALDI-TOF

Application Details

Restrictions: For Research Use only

Handling

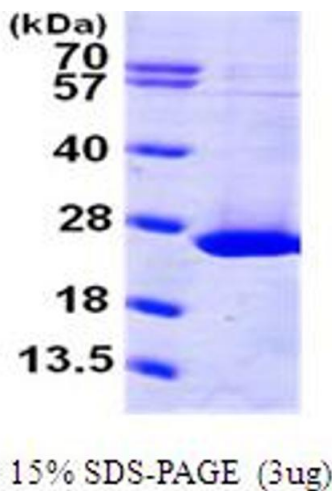
Format: Liquid

Concentration: 0.25mg/ml (determined by Bradford assay)

Buffer: Liquid. 20mM Tris-HCl buffer (pH8.0) containing 40% glycerol, 100mM NaCl, 2mM DTT

Storage: 4 °C

Images



SDS-PAGE

Image 1.