

Datasheet for ABIN667203

Luciferase Protein (AA 1-550) (His tag)[Go to Product page](#)**1** Image

Overview

Quantity:	100 µg
Target:	Luciferase
Protein Characteristics:	AA 1-550
Origin:	Firefly
Source:	Escherichia coli (E. coli)
Protein Type:	Recombinant
Purification tag / Conjugate:	This Luciferase protein is labelled with His tag.
Application:	SDS-PAGE (SDS)

Product Details

Characteristics:	Luciferase, 1-550aa, Firefly, His tag, E.coli
Purity:	> 90 by SDS - PAGE

Target Details

Target:	Luciferase
Abstract:	Luciferase Products
Background:	Luciferase is a generic term for the class of oxidative enzymes used in bioluminescence and is distinct from a photoprotein. Luciferase catalyzes a bioluminescent reaction which requires the substrate luciferin as well as Mg ²⁺ and ATP, produces green light with a wavelength of 562 nm. Luciferase from firefly is widely used as a reporter for studying gene regulation and function, and for pharmaceutical screening. Recombinant firefly Luciferase, fused to His-tag at N-

Target Details

terminus, was expressed in E.coli and purified by using conventional chromatography techniques. Synonyms: Luciferin 4-monooxygenase, LUC. NCBI no.: BAF48390

Molecular Weight: 62.9 kDa (571aa), confirmed by MALDI-TOF

Application Details

Restrictions: For Research Use only

Handling

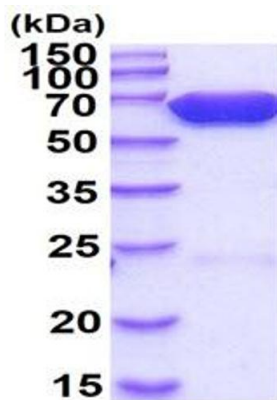
Format: Liquid

Concentration: 1mg/ml (determined by Bradford assay)

Buffer: Liquid. In 20mM Tris-HCl buffer (pH 8.0) containing 1mM DTT, 10% glycerol

Storage: 4 °C

Images



15% SDS-PAGE (3ug)

SDS-PAGE

Image 1.