

Datasheet for ABIN667208

**CDC34 Protein (AA 1-236) (His tag)**[Go to Product page](#)**1** Image

## Overview

Quantity:	100 µg
Target:	CDC34
Protein Characteristics:	AA 1-236
Origin:	Human
Source:	Escherichia coli (E. coli)
Protein Type:	Recombinant
Purification tag / Conjugate:	This CDC34 protein is labelled with His tag.
Application:	SDS-PAGE (SDS)

## Product Details

Characteristics:	CDC34, 1-236aa, Human, His tag, E.coli
Purity:	> 95 % by SDS - PAGE

## Target Details

Target:	CDC34
Alternative Name:	CDC34 ( <a href="#">CDC34 Products</a> )
Background:	CDC34 is a member of the ubiquitin-conjugating enzyme family. Ubiquitin-conjugating enzyme catalyzes the covalent attachment of ubiquitin to other proteins. This protein is a part of the large multiprotein complex, which is required for ubiquitin-mediated degradation of cell cycle G1 regulators, and for the initiation of DNA replication. CDC34 is thought to be the structural and functional homolog of <i>Saccharomyces cerevisiae</i> CDC34, which is essential for the G1 to S

## Target Details

---

phase transition. Recombinant human CDC34 protein, fused to His-tag at N-terminus, was expressed in E.coli and purified by using conventional chromatography techniques. Synonyms: Ubiquitin-conjugating enzyme E2 R1, E2-CDC34, UBC3, UBCH3, UBE2R1. NCBI no.: NP\_004350

Molecular Weight: 28.9kDa (256aa), confirmed by MALDI-TOF

## Application Details

---

Restrictions: For Research Use only

## Handling

---

Format: Liquid

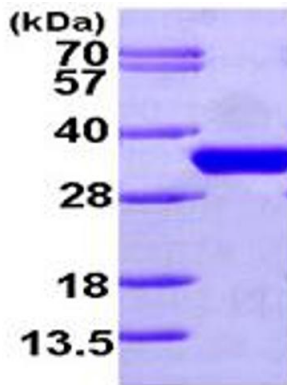
Concentration: 1mg/ml (determined by Bradford assay)

Buffer: Liquid. 20mM Tris-HCl buffer (pH8.0) containing 10% glycerol, 1mM DTT, 50mM NaCl

Storage: 4 °C

## Images

---



15% SDS-PAGE (3ug)

### SDS-PAGE

Image 1.